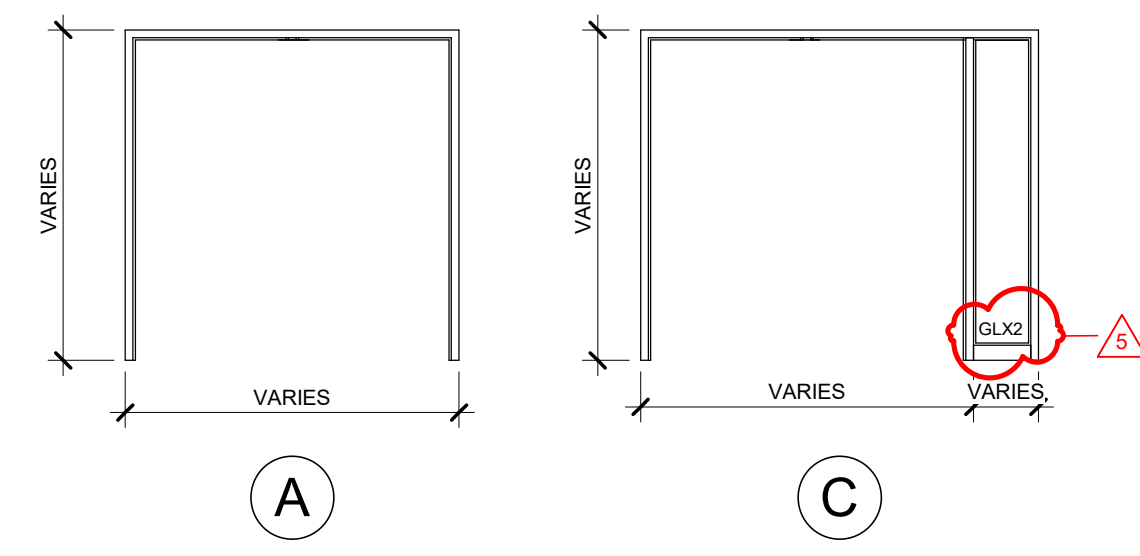


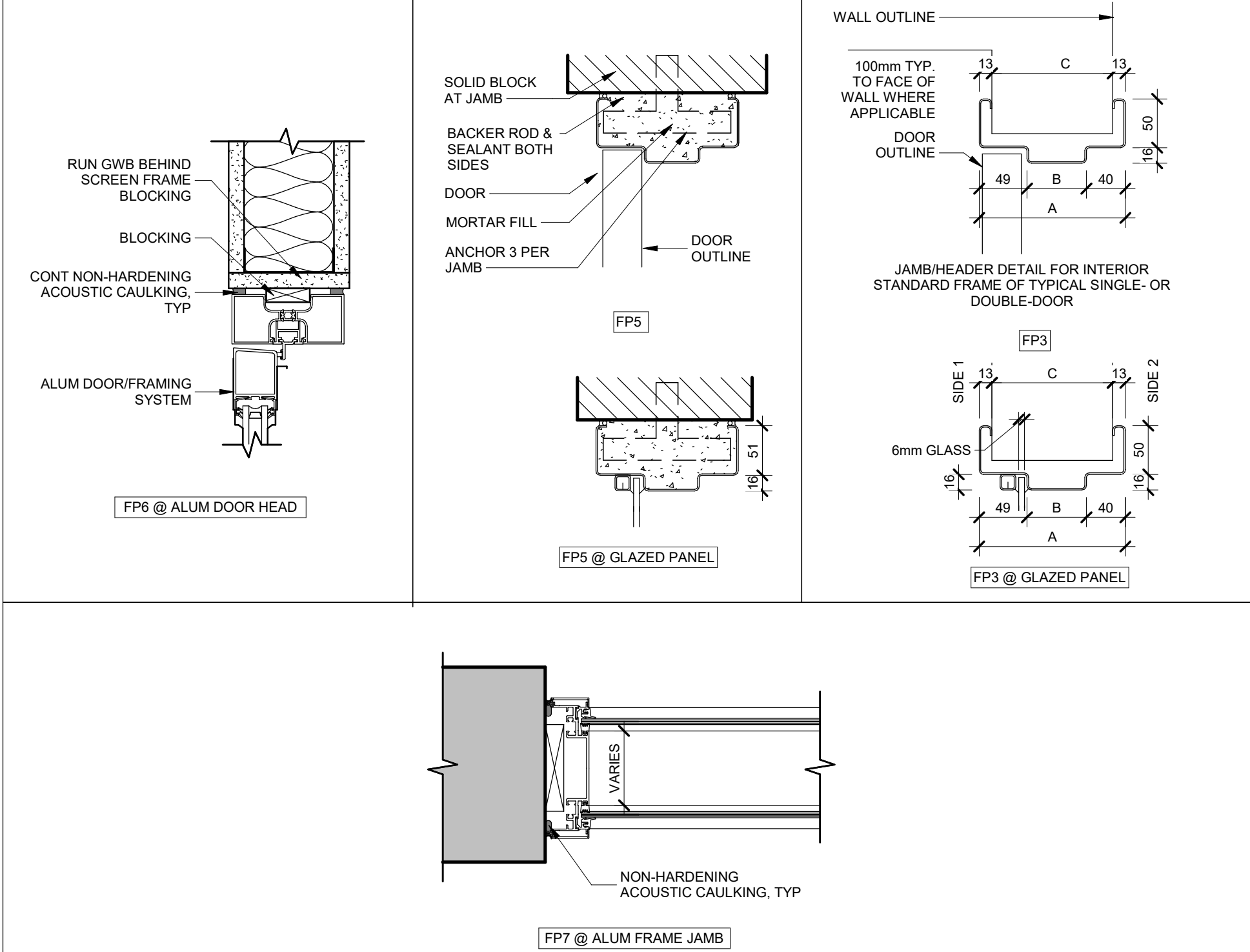
DOOR / FRAME SCHEDULE

NO.	ROOM NO.	FRR	DOOR							FRAME					REMARKS
			WIDTH	HEIGHT	THICKNESS	PANEL TYPE	MAT.	FINISH	GLASS	TYPE	PROFILE	MAT.	FINISH	GLASS	
331.1	331	45 MIN.	1045	2400	45	D	HM	PT	GL8	C	FP5	HM	PT	GL8	AUTOMATIC DOOR OPERATOR C/W ELECTRIC STRIKE, SELF CLOSER AND DEADLATCH, 200MM SS KICK PLATES, SS BUTT HINGES, CARD READER
331.2	331	-	813	2150	45	A	WD	STAIN TO MATCH PLAM1	-	A	FP3	HM	PT	-	LEVER SET, STOREROOM FUNCTION, SS BUTT HINGES
331.3	331	-	1000	2150	45	A	HM	PT	-	A	FP3	HM	PT	-	EQUAL DOUBLE SWING DOORS (500MM PANELS), LEVER PASSAGE SET, SS BUTT HINGES, WALL STOPS, SOUND SEAL
331A.1	331A	-	6638	2375	57	L	-	-	-	-	-	-	-	-	FOLDING PARTITION WALL BY MANUF SECURED TO STEEL FRAME - REFER TO STRUC DWGS FOR MOUNTING REQ'S AND CONFIRM ALL PROPOSED DIMENSIONS/SIZES W/ MANUF
331B.1	331B	-	995	2150	45	A	WD	STAIN TO MATCH PLAM1	-	C	FP3	HM	PT	GLX2	LEVER LOCK SET, SS BUTT HINGES, WALL STOP, SOUND SEAL, (SIDELIGHT, STC 38 - MIN 30MM THICK DOUBLE-GLAZED CONSTRUCTION (6MM GLASS, 18MM AIR GAP, 6MM GLASS))
331C.1	331C	-	995	2150	45	A	WD	STAIN TO MATCH PLAM1	-	C	FP3	HM	PT	GLX2	DOOR TO HAVE 950MM CLEAR OPENING, LEVER LOCK SET, SS BUTT HINGES, WALL STOP, SOUND SEAL, (SIDELIGHT, STC 38 - MIN 30MM THICK DOUBLE-GLAZED CONSTRUCTION (6MM GLASS, 18MM AIR GAP, 6MM GLASS))
331D.1	331D	-	995	2150	45	A	WD	STAIN TO MATCH PLAM1	-	C	FP3	HM	PT	GLX2	DOOR TO HAVE 950MM CLEAR OPENING, LEVER LOCK SET, SS BUTT HINGES, WALL STOP, SOUND SEAL, (SIDELIGHT, STC 38 - MIN 30MM THICK DOUBLE-GLAZED CONSTRUCTION (6MM GLASS, 18MM AIR GAP, 6MM GLASS))
331E.1	331E	-	950	2150	45	A	WD	STAIN TO MATCH PLAM1	-	A	FP3	HM	PT	-	DOOR TO HAVE 950MM CLEAR OPENING, LEVER LOCK SET, SS BUTT HINGES, WALL STOP, SOUND SEAL
336.1	336	45 MIN.	1829	2400	45	A	HM	PT	-	A	FP5	EX	PT	-	EX DOOR FRAME TO REMAIN C/W NEW DOUBLE SWING PANELS, LEVER SET, CARD READER, ELECTRIC STRIKE, SS BUTT HINGES, 150 MM DEADBOLTS TOP AND BOTTOM, FLOOR STOPS, SELF CLOSER
336A.1	336A	-	1000	2000	45	A	HM	PT	-	A	FP3	HM	PT	-	EQUAL DOUBLE SWING DOORS (500MM PANELS), LEVER PASSAGE SET, SS BUTT HINGES, WALL STOP ONE LEAF, FLOOR STOP FOR LEAF OPENING TO CONTROL PANELS, SOUND SEAL, CONFIRM DOOR FRAMING ROUGH-IN LOCATION AND DOOR SIZE W/ PROJECTION OF WALL MOUNTED MECHANICAL CONTROL PANELS AND ENSURE NO DOOR SWING CONFLICT - REPORT ANY CONFLICTS W/ ARCHITECT PRIOR TO ORDERING DOOR ELEC PANEL
337.1	337	45 MIN.	1524	2400	45	D	HM	PT	GL8	A	FP5	HM	PT	-	UNEQUAL DOUBLE SWING DOORS (650MM CLEAR OPENING ACTIVE LEAF), AUTOMATIC DOOR OPERATOR, ELECTRIC STRIKE, SELF CLOSER AND INACTIVE LEAF, SS BUTT HINGES, 200MM SS KICK PLATES, WALL STOPS AND 150 MM DEAD BOLT AT TOP AND BOTTOM OF INACTIVE LEAF, CARD READER
337A.1	337A	-	1022	2150	45	K	AL	ANOD	Y	-	-	AL	ANDO	-	MANUAL SLIDING DOOR WITH BREAKAWAY, ASTRAGAL COMPRESSIBLE SEALS AT THE HEAD, JAMB, AND IN BETWEEN THE DOOR PANELS FOR BI-PARTING DOORS, AUTOMATIC DOOR BOTTOMS
337B.1	337B	-	1200	2150	45	K	AL	ANOD	GLX1	-	FP6	AL	ANDO	-	MANUAL SLIDING DOOR W/ PULL HANDLE, ASTRAGAL COMPRESSIBLE SEALS AT THE HEAD, JAMB, AND IN BETWEEN THE DOOR PANELS FOR BI-PARTING DOORS, AUTOMATIC DOOR BOTTOMS
337B.2	337B	-	1828	2150	45	A	AL	ANOD	-	N/A	-	AL	ANDO	-	MANUAL SLIDING DOOR W/ PULL HANDLE, ASTRAGAL COMPRESSIBLE SEALS AT THE HEAD, JAMB, AND IN BETWEEN THE DOOR PANELS FOR BI-PARTING DOORS, AUTOMATIC DOOR BOTTOMS
337B.3	337	-	950	2150	45	B	AL	ANOD	GLX1	-	FP6	AL	ANDO	-	LEVER LOCK SET, SS BUTT HINGES, SELF CLOSER, DEADLATCH, FLOOR STOP

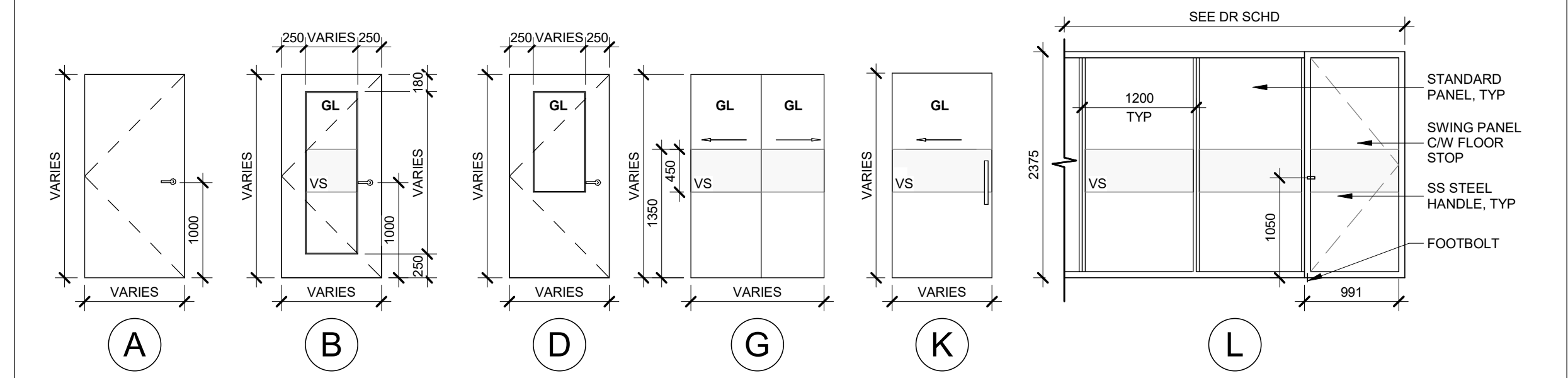
DOOR FRAME ELEVATION



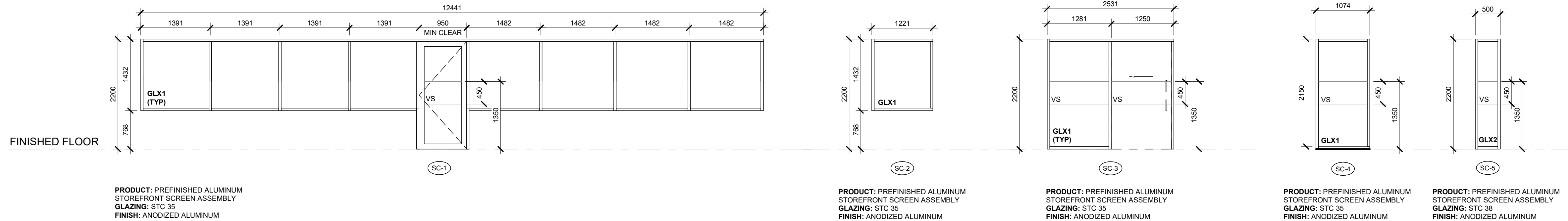
DOOR FRAME PROFILES & ASSEMBLIES



PANEL TYPES



SCREEN ELEVATIONS



DOOR SCHEDULE NOTES

- DO NOT SCALE DRAWINGS.
- ALL MATERIAL AND WORKMANSHIP SHALL COMPLY WITH ALL APPLICABLE CANADIAN CONSTRUCTION STANDARDS AND CURRENT APPLICABLE BUILDING CODE AND GOVERNING REGULATIONS.
- OVERALL DIMENSIONS PROVIDED FOR DOOR SCHEDULE ARE ROUGH-OPENING SIZES. OVERALL FRAME DIMENSIONS SHALL BE SIZED ACCORDINGLY.
- THE CONTRACTOR SHALL SITE VERIFY ALL DIMENSIONS AND EXISTING CONDITIONS ON SITE AND SHALL REPORT ANY DISCREPANCIES TO THE CONSULTANT PRIOR TO DOOR FABRICATION.
- LAMINATED/TEMPERED SAFETY GLASS CONFORMING TO CAN/CSA-B-12.1-M, "TEMPERED OR LAMINATED SAFETY GLASS" IN GLAZED ENTRANCE ASSEMBLIES BY CBC 3.1.18 AND 9.6.1.4, AS FOLLOWS:
 - WHERE A DOOR'S GLASS PANEL AREA EXCEEDS 0.5m² (5.38ft²) OR THE PANEL EXTENDS BELOW 900 (30.43") A.F.F.
 - WHERE A SIDELIGHT EXCEEDS 500 (16.85") IN WIDTH IN STORM AND SLIDING DOOR ASSEMBLIES
- ALL APPLICABLE CLOSURE TRIM TO SUIT OPENINGS. COLOUR OF TRIM TO MATCH COLOUR OF DOOR FRAMES.
- SEALANT AROUND DOOR FRAMES INSIDE AND OUT. SEALANT COLOUR TO MATCH COLOUR OF FRAMES.
- COORDINATE WITH OWNER KEYING OF ALL DOORS.
- ALL ELECTRICAL ROOM DOORS TO BE KEYED TO LOCAL ELECTRICAL AUTHORITIES STANDARDS.
- CONFIRM ALL HARDWARE PRIOR TO CONSTRUCTION.
- ALL QUANTITIES TO BE CONFIRMED BY CONTRACTOR PRIOR TO CONSTRUCTION.
- WHERE NEW DOORS ARE TO MATCH EXISTING DOORS, DOOR SCHEDULE ELEVATIONS ARE SHOWN FOR GENERAL CONFORMANCE AND REPRESENTATION ONLY. ALL INFORMATION RELATIVE TO EXISTING CONDITIONS IS OFFERED TO ASSIST THE CONTRACTOR IN EVALUATION OF THE WORK, BUT WITH NO SPECIFIC REPRESENTATION EITHER EXPRESSED OR IMPLIED, AS TO ACCURACY OR COMPLETENESS. GENERAL CONTRACTOR IS RESPONSIBLE FOR ANY DEDUCTIONS, DIRECTIONS, OR CONCLUSIONS MADE ON THE BASIS OF THIS INFORMATION.
- GENERAL CONTRACTOR TO PROVIDE SHOP DRAWINGS FOR ALL DOORS AS FOLLOWS:
 - FINISH HARDWARE SCHEDULE PREPARED BY AN ARCHITECTURAL HARDWARE CONSULTANT (AHC), IN VERTICAL FORMAT TO DHI SEQUENCE AND FORMAT FOR THE HARDWARE SCHEDULE.
 - KEYING SCHEDULE PREPARED BY AN ARCHITECTURAL HARDWARE CONSULTANT (AHC), TO DHI KEYING SYSTEMS AND NOMENCLATURE, INCLUDING ALL SPECIAL KEYING NOTES AND STAMPING INSTRUCTIONS.
 - WIRING DIAGRAMS, INCLUDING A WRITTEN DESCRIPTION OF THE FUNCTIONAL USE OF ALL ELECTRICAL HARDWARE. INCLUDE DOOR AND FRAME ELEVATIONS SHOWING THE LOCATION OF EACH ITEM OF ELECTRICAL HARDWARE TO BE INSTALLED, INCLUDING DIAGRAM SHOWING NUMBER AND SIZE OF ALL CONDUCTORS.
- DOOR HARDWARE SUPPLIER IS RESPONSIBLE FOR SUPPLYING & INSTALLING ALL DOOR HARDWARE.
- ALL HARDWARE IS TO BE LEVER STYLE.
- ALL INTERIOR HARDWARE IS TO BE BRUSHED NICKEL FINISH, UNLESS NOTED OTHERWISE.
- ENSURE EXISTING EXIT DOOR HARDWARE IS FUNCTIONING WELL & OBC COMPLIANT. IDENTIFY AND REPLACE NON-COMPLIANT HARDWARE.
- REFER TO SPECIFICATION FOR GLAZING TYPE DESCRIPTION AND REQUIREMENT.

DOOR ABBREVIATIONS






ACC	= HANDICAP ACUATOR	OFFICE SET	= OFFICE FUNCTION
AL	= ALUMINUM	PB	= PUSH BUTTON FOR DOOR
GLASM	= GLASS	PBC	= PUSH BUTTON UNDER COUNTER
CLR	= CLEAR	PH	= PANIC HARDWARE
ANOD	= ANODIZED	PKG	= HARDWARE PACKAGE
CR	= CARD READER	PFIN	= PRE-FINISHED
DB	= DOOR BELL	PLAM	= PLASTIC LAMINATE
DC	= DOOR CLOSER	PP	= PUSH/PULL
DCA	= DOOR CONTROL ALARM	PRV	= PRIVACY SET
DBL TEMP	= DOUBLE TEMPERED	PS	= PASSAGE SET
DS	= DOOR STOP (WALL)	P	= PAINTED
DSL	= DOOR SEAL	SCWD	= SOLID WOOD
DSW	= DOOR SWEEP	SS	= STAINLESS STEEL
ES	= ELECTRIC STRIKE	ST	= STAINED
EX	= EXISTING	TB	= THERMALLY BROKEN
FF	= FACTORY FINISH	TEMP	= TEMPERED (6MM)
FBOLT	= FLUSH BOLT	TH	= THRESHOLD
FL	= FLOOR	THK	= THICKNESS
FRG	= FIRE RATED GLASS	TTL	= THUMB TURN LOCK
GL	= GLASS	WD	= WEATHER STRIPPING
GLAZ	= GLAZING	WS	= WEATHER STRIPPING
GWG	= GEORGIAN WIRE GLASS	VS	= VISION STRIP
HM	= HOLLOW METAL		
HR	= HOUR		
KP	= KICK PLATE		
KPD	= KEY PAD		
LS	= LOCKSET		
MAG	= ELECTROMAGNETIC LOCK		
MAT	= MATERIAL		
MS	= MOTION SENSOR		

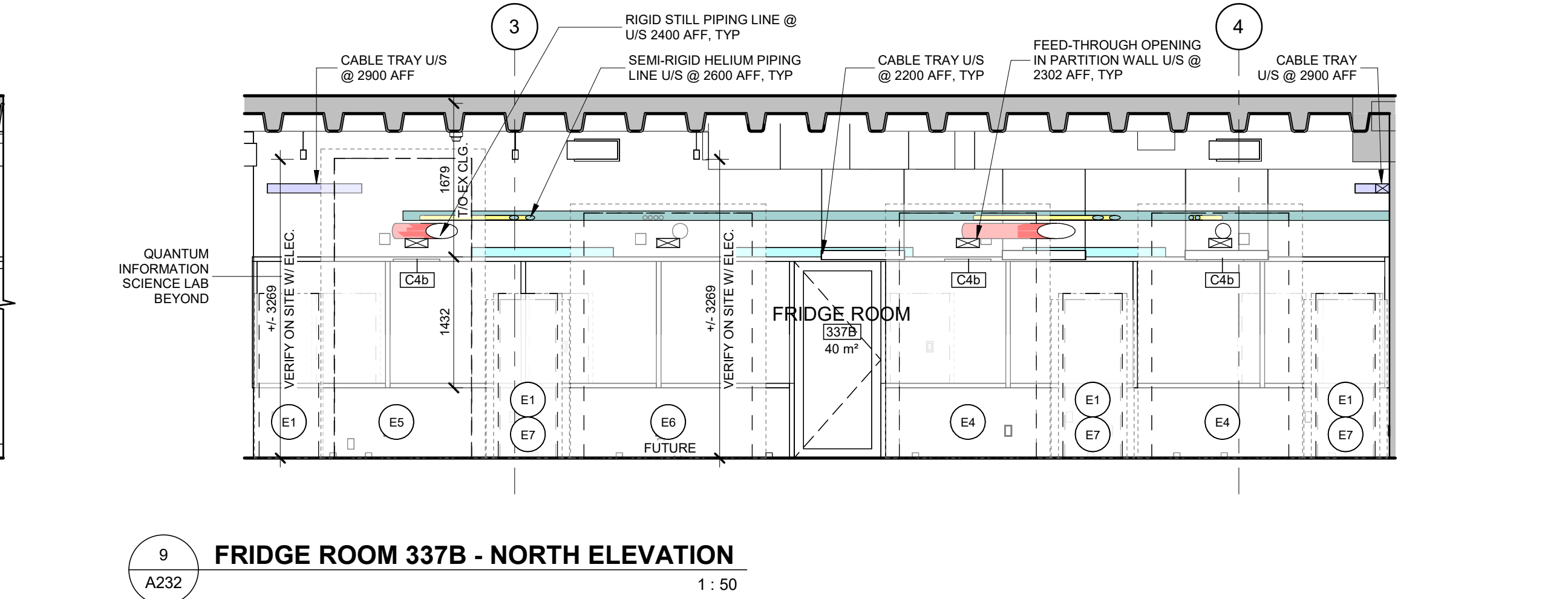
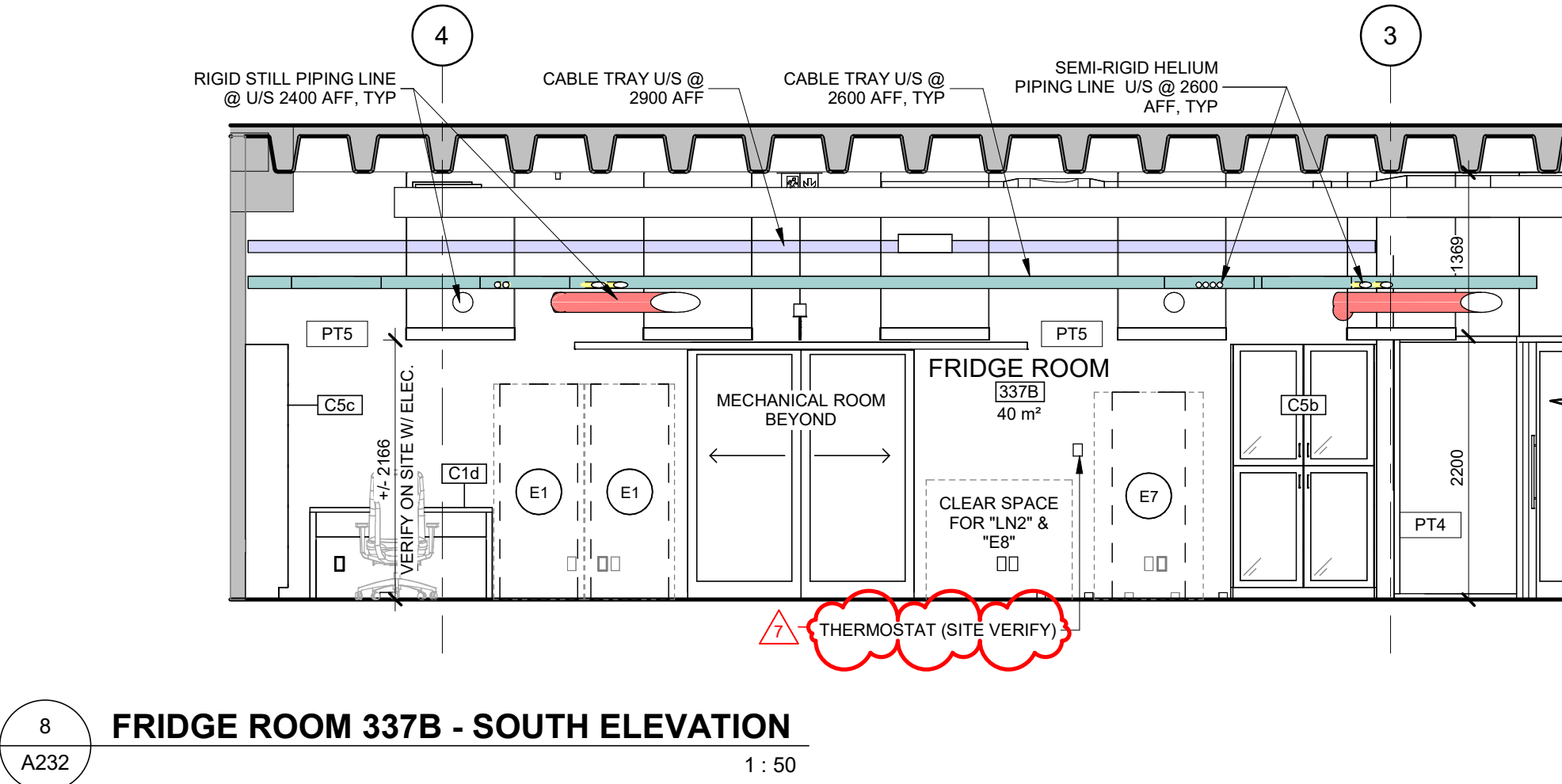
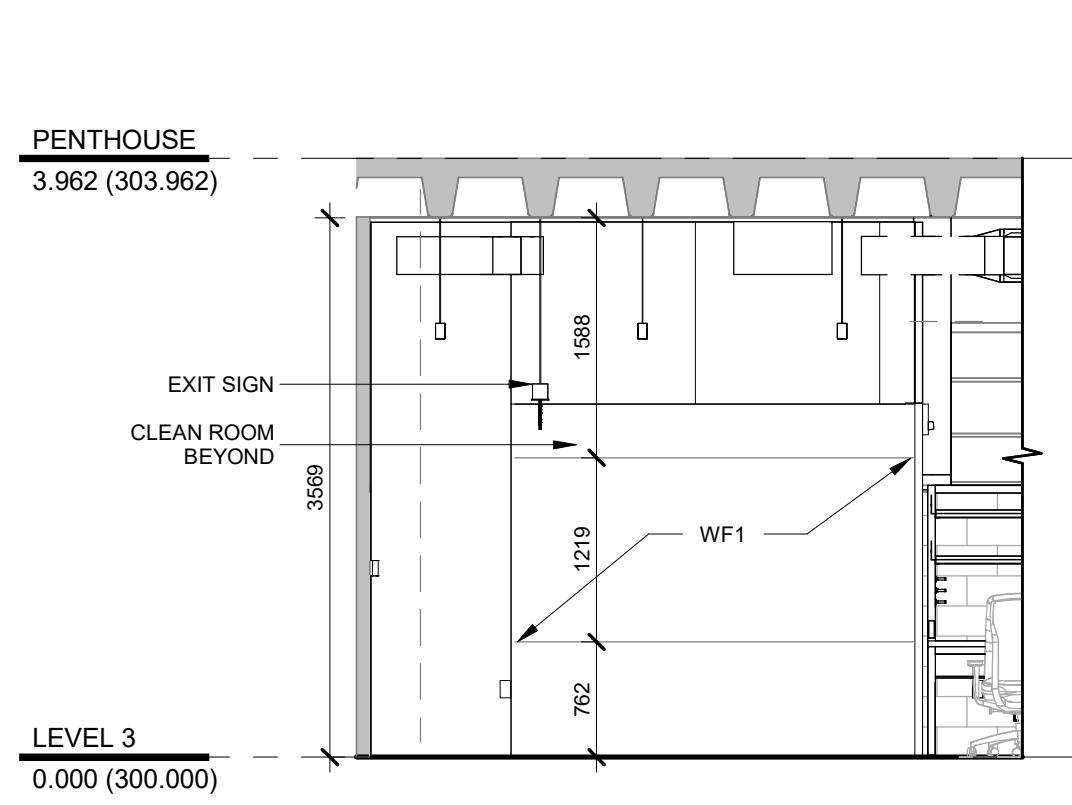
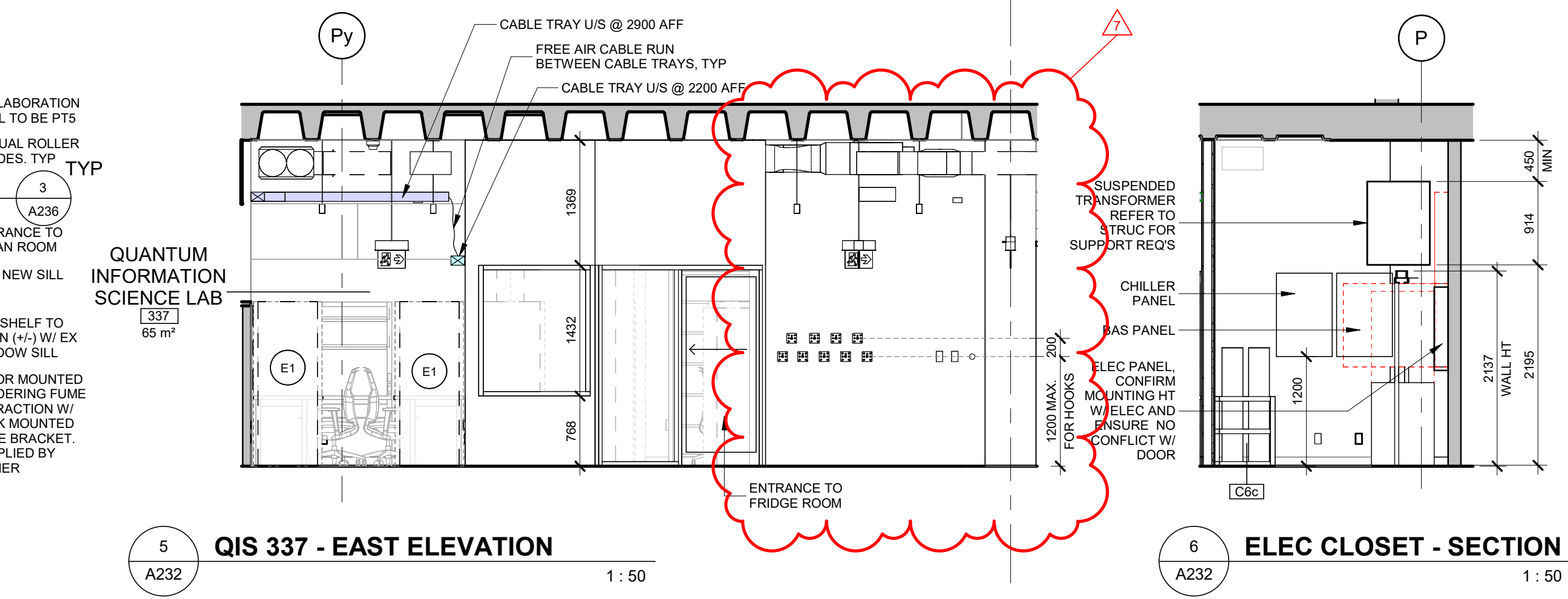
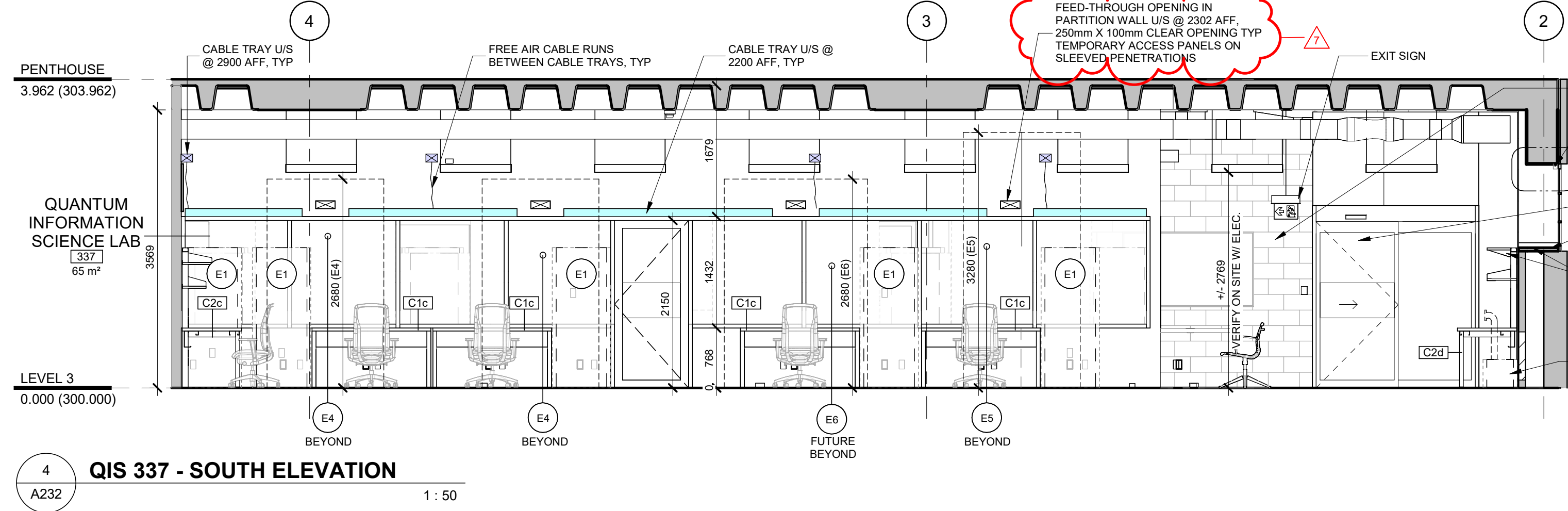
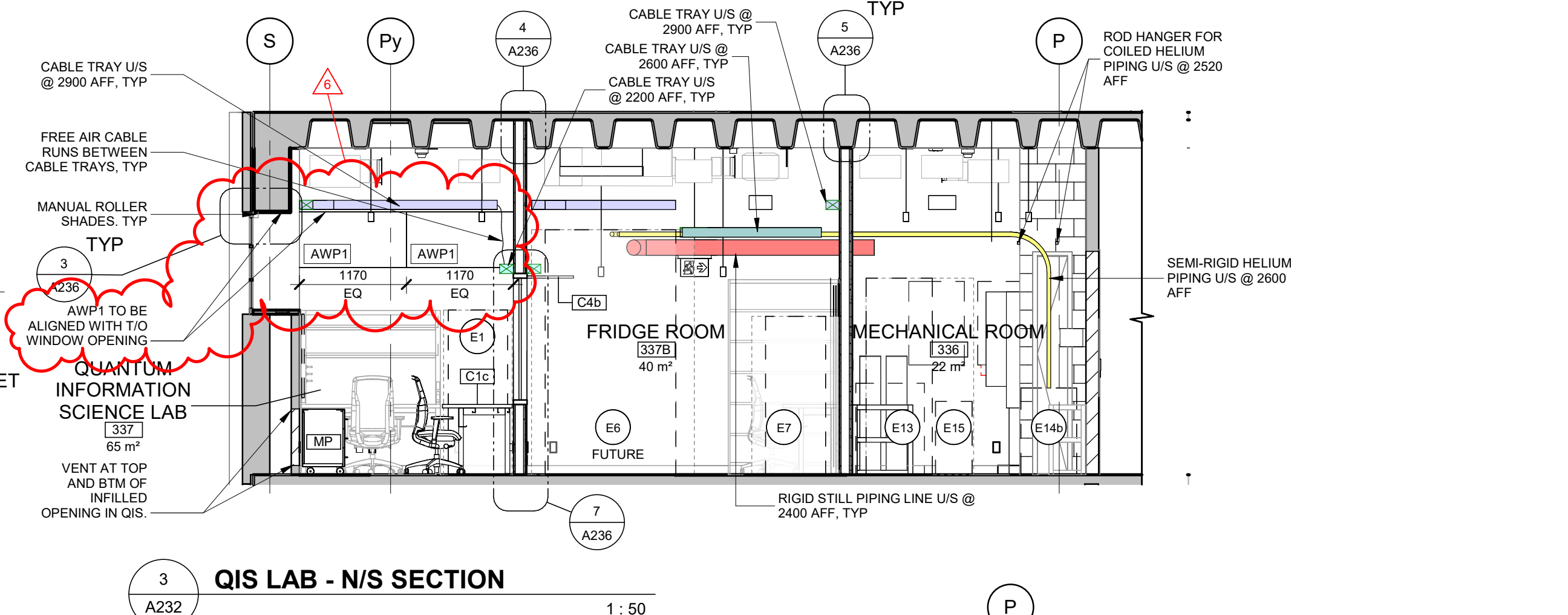
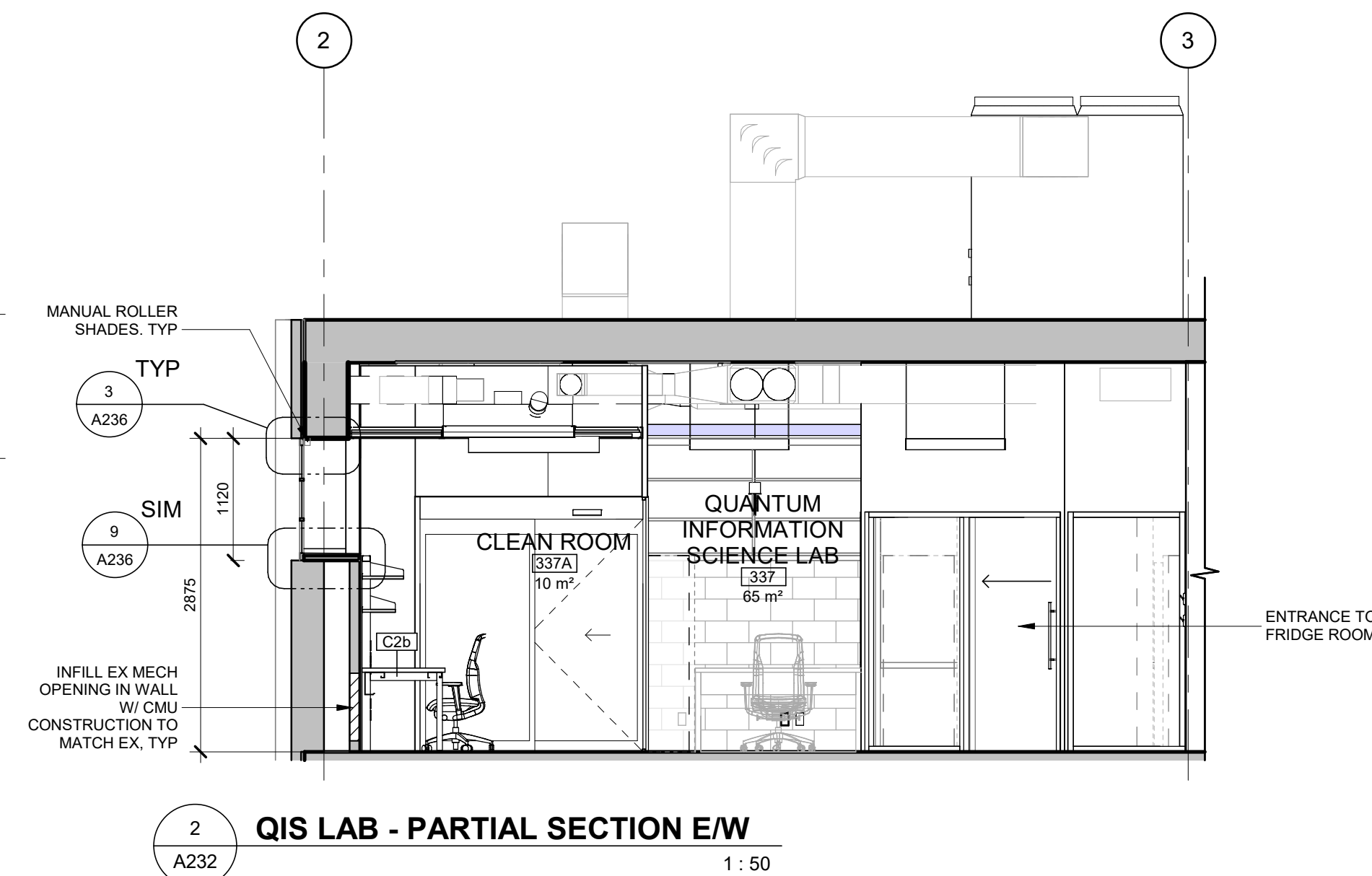
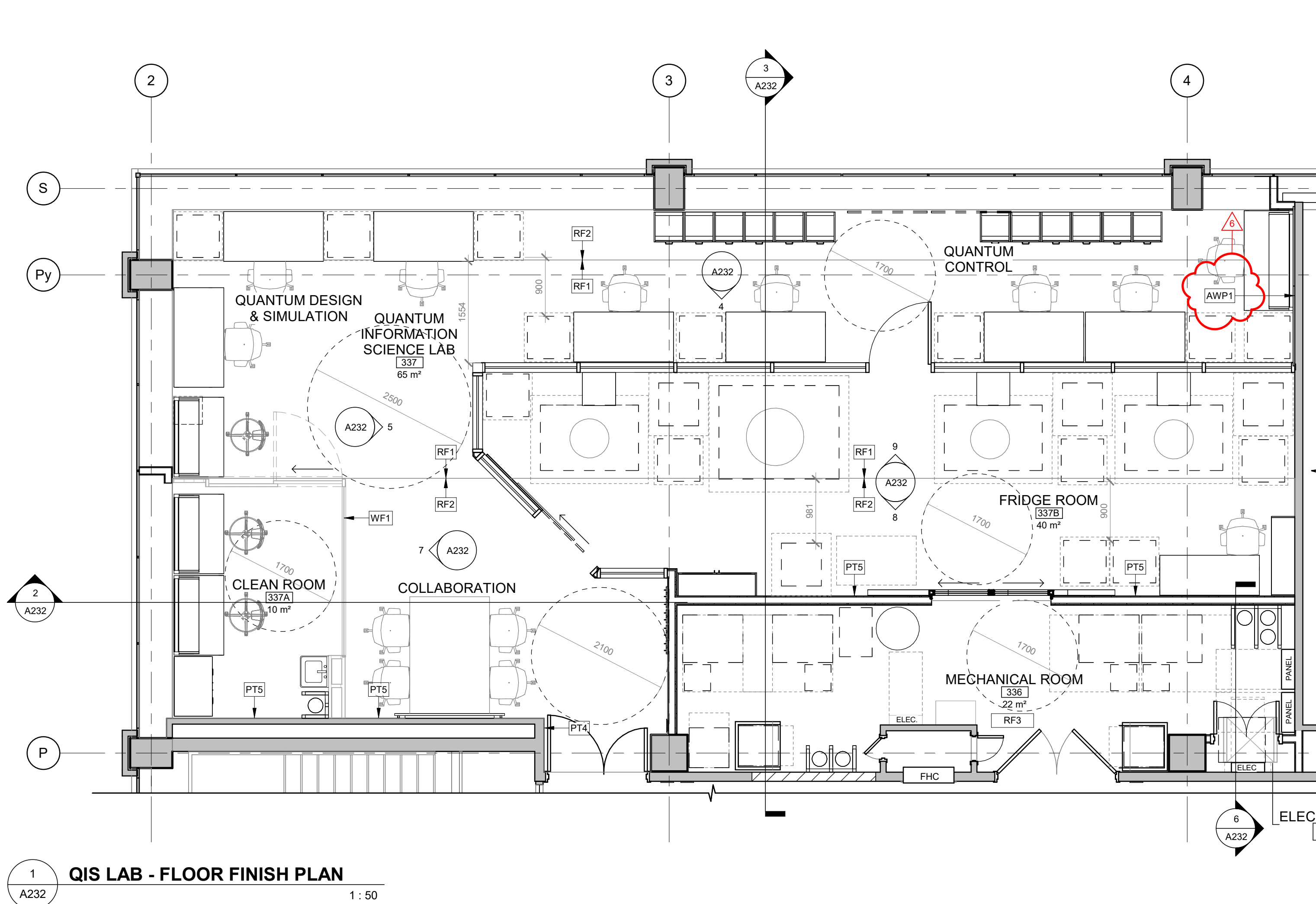
GENERAL SCREEN NOTES

- REFER TO SYMBOL (SC-1) FOR LOCATIONS AS NOTED ON FLOOR PLANS, AND INTERIOR ELEVATIONS.
- ALL FRAMES AND MULLIONS ARE ALUMINUM UNLESS NOTED OTHERWISE.
- REFER TO INTERIOR ELEVATIONS FOR SIZES, GLAZING TYPES AND MULLION ARRANGEMENT.
- REFER TO SPECIFICATIONS FOR GLAZING TYPES.

SCREEN SCHEDULE NOTES

- DO NOT SCALE DRAWINGS.
- ALL MATERIAL AND WORKMANSHIP SHALL COMPLY WITH ALL APPLICABLE CANADIAN CONSTRUCTION STANDARDS AND THE ONTARIO BUILDING CODE (2024).
- THE CONTRACTOR SHALL SITE VERIFY ALL DIMENSIONS AND EXISTING CONDITIONS ON SITE AND SHALL REPORT ALL DISCREPANCIES TO THE CONSULTANT PRIOR TO WINDOW FABRICATION.
- ALL APPLICABLE CLOSURE TRIM TO SUIT OPENINGS. COLOUR OF TRIM TO MATCH COLOUR OF WINDOW FRAMES.
- SEALANT AROUND WINDOW FRAMES INSIDE AND OUT. SEALANT COLOUR TO MATCH COLOUR OF FRAMES.
- REFER TO PLANS AND ELEVATIONS FOR VERTICAL MULLION ORIENTATION (MIRRORED CONDITION) AND INCIDENTAL SPANDREL CONDITIONS

<div><div>UNIVERSITY OF TORONTO</div></div>																													
PROJECT LOGO																													
<div><div>TRUE NORTH</div></div>	<div><div>CONSTRUCTION NORTH</div></div>																												
<div></div>																													
KEY PLAN																													
<div>PRELIMINARY - NOT FOR CONSTRUCTION</div>																													
<div>REVISIONS</div> <table border="1"><thead><tr><th>No.</th><th>DESCRIPTION</th><th>DATE</th></tr></thead><tbody><tr><td>8</td><td>ADDENDUM #2</td><td>2026.01.13</td></tr><tr><td>7</td><td>ADDENDUM #1</td><td>2026.01.13</td></tr><tr><td>6</td><td>IFT</td><td>2025.11.27</td></tr><tr><td>5</td><td>ISSUED FOR 100% CD</td><td>2025.11.21</td></tr><tr><td>4</td><td>ISSUED FOR 90% CD</td><td>2025.10.17</td></tr><tr><td>3</td><td>ISSUED FOR PERMIT</td><td>2025.10.03</td></tr><tr><td>2</td><td>ISSUED FOR 100%DD R1</td><td>2025.09.19</td></tr><tr><td>1</td><td>ISSUED FOR 100% CD</td><td>2025.07.11</td></tr></tbody></table>			No.	DESCRIPTION	DATE	8	ADDENDUM #2	2026.01.13	7	ADDENDUM #1	2026.01.13	6	IFT	2025.11.27	5	ISSUED FOR 100% CD	2025.11.21	4	ISSUED FOR 90% CD	2025.10.17	3	ISSUED FOR PERMIT	2025.10.03	2	ISSUED FOR 100%DD R1	2025.09.19	1	ISSUED FOR 100% CD	2025.07.11
No.	DESCRIPTION	DATE																											
8	ADDENDUM #2	2026.01.13																											
7	ADDENDUM #1	2026.01.13																											
6	IFT	2025.11.27																											
5	ISSUED FOR 100% CD	2025.11.21																											
4	ISSUED FOR 90% CD	2025.10.17																											
3	ISSUED FOR PERMIT	2025.10.03																											
2	ISSUED FOR 100%DD R1	2025.09.19																											
1	ISSUED FOR 100% CD	2025.07.11																											
<div>DISCREPANCIES MUST BE REPORTED IMMEDIATELY TO THE ARCHITECT / ENGINEER BEFORE PROCEEDING.</div> <div>ONLY FIGURED DIMENSIONS MUST BE USED.</div> <div>THE CONTRACTOR MUST CHECK THE DIMENSIONS ON SITE.</div> <div>THE DRAWING IS PROTECTED BY COPYRIGHT.</div> <div>ALL DIMENSIONS ARE SHOWN IN MILLIMETERS.</div> <div>DO NOT SCALE THE DRAWINGS.</div>																													
<div><div>CallumSather</div><div>Westinghouse HQ, 2nd Floor 286 Sanford Ave. N Hamilton, ON L8L 6A1 905.526.6700 www.mccallumsather.com</div></div>																													
<div>SEAL</div>																													
<div>CONSULTANTS:</div>																													
<div>PROJECT:</div> <div>MCLENNAN PHYSICAL LABORATORIES - P078-24-109 - QIS LAB & CQICQ SUITE</div> <div>255 HURON STREET, TORONTO, ONTARIO M5S 3J1</div>																													
<div>DRAWING TITLE:</div> <div>QIS LAB - PLAN & RCP</div>																													
<div>SHEET SIZE: ARCH D (810x614)</div> <div>SCALE: As indicated</div>																													
<div>PROJECT NO: 24119</div>																													
<div>DRAWING NO: A231</div>																													



UNIVERSITY OF TORONTO

PROJECT LOGO

KEY PLAN

REVISIONS

NO.	DESCRIPTION	DATE
7	ADDENDUM #5	2026 01 13
6	ADDENDUM #1	2026 01 13
5	IFT	2025 11 27
4	ISSUED FOR 100% CD	2025 11 21
3	ISSUED FOR 90% CD	2025 10 17
2	ISSUED FOR 100% R1	2025 09 19
1	ISSUED FOR 100% SD	2025 07 11

DISCREPANCIES MUST BE REPORTED IMMEDIATELY TO THE ARCHITECT / ENGINEER BEFORE PROCEEDING.

ONLY FIGURED DIMENSIONS MUST BE USED.

THE CONTRACTOR MUST CHECK THE DIMENSIONS ON SITE.

THE DRAWING IS PROTECTED BY COPYRIGHT.

ALL DIMENSIONS ARE SHOWN IN MILLIMETERS. DO NOT SCALE THE DRAWINGS.

mcCallumSather

Westinghouse HQ, 2nd Floor
286 Sanford Ave. N
Hamilton, ON L8L 6A1
905.526.6700
www.mccallumsather.com

PROJECT:

MCLENNAN PHYSICAL LABORATORIES - P078-24-109 - QIS LAB & CQIQC SUITE

255 HURON STREET, TORONTO, ONTARIO M5S 3J1

DRAWING TITLE:

QIS LAB - FINISHES

SHEET SIZE:

ARCH D (810x614)

SCALE:

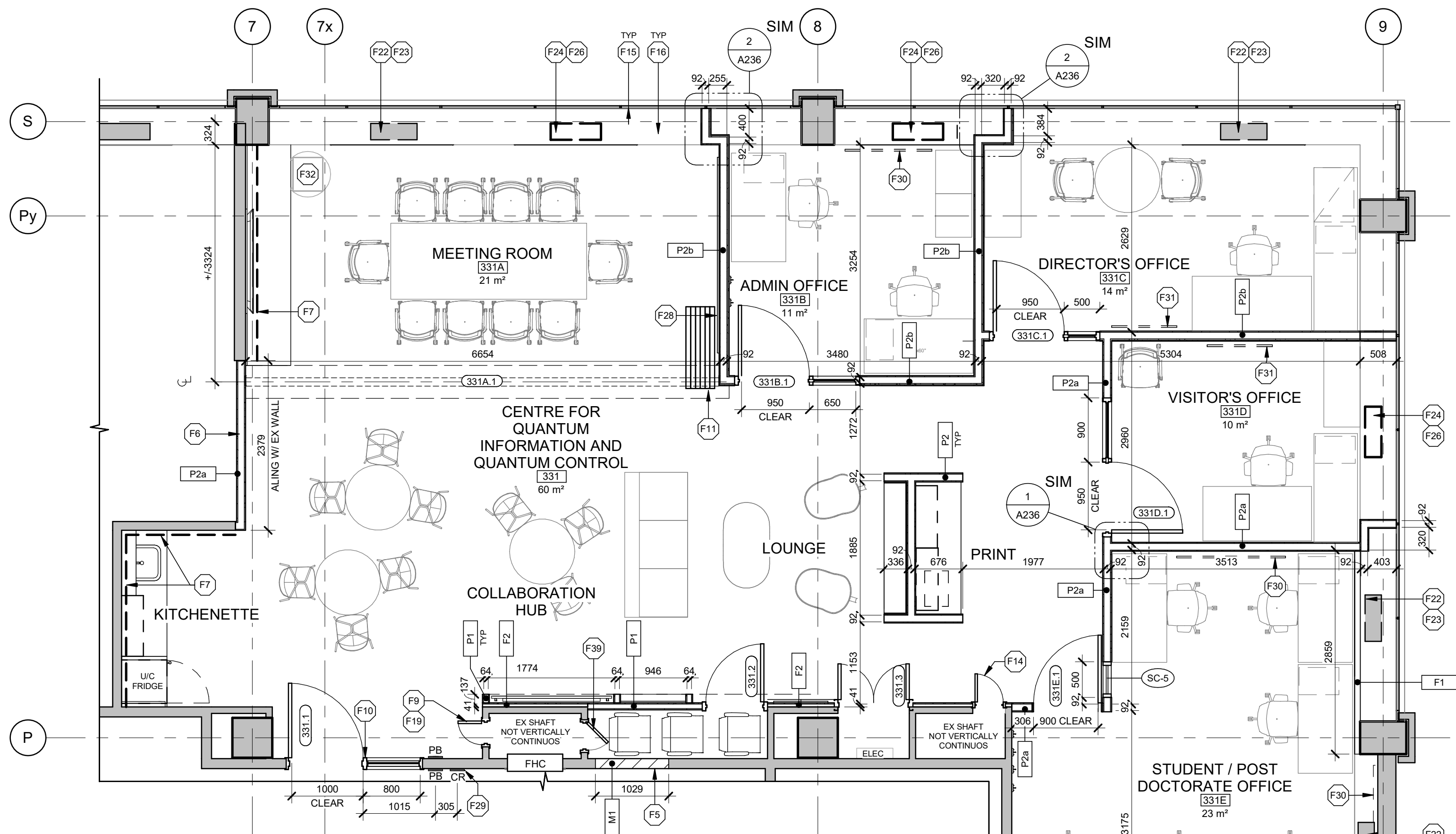
1:50

PROJECT NO.

24119

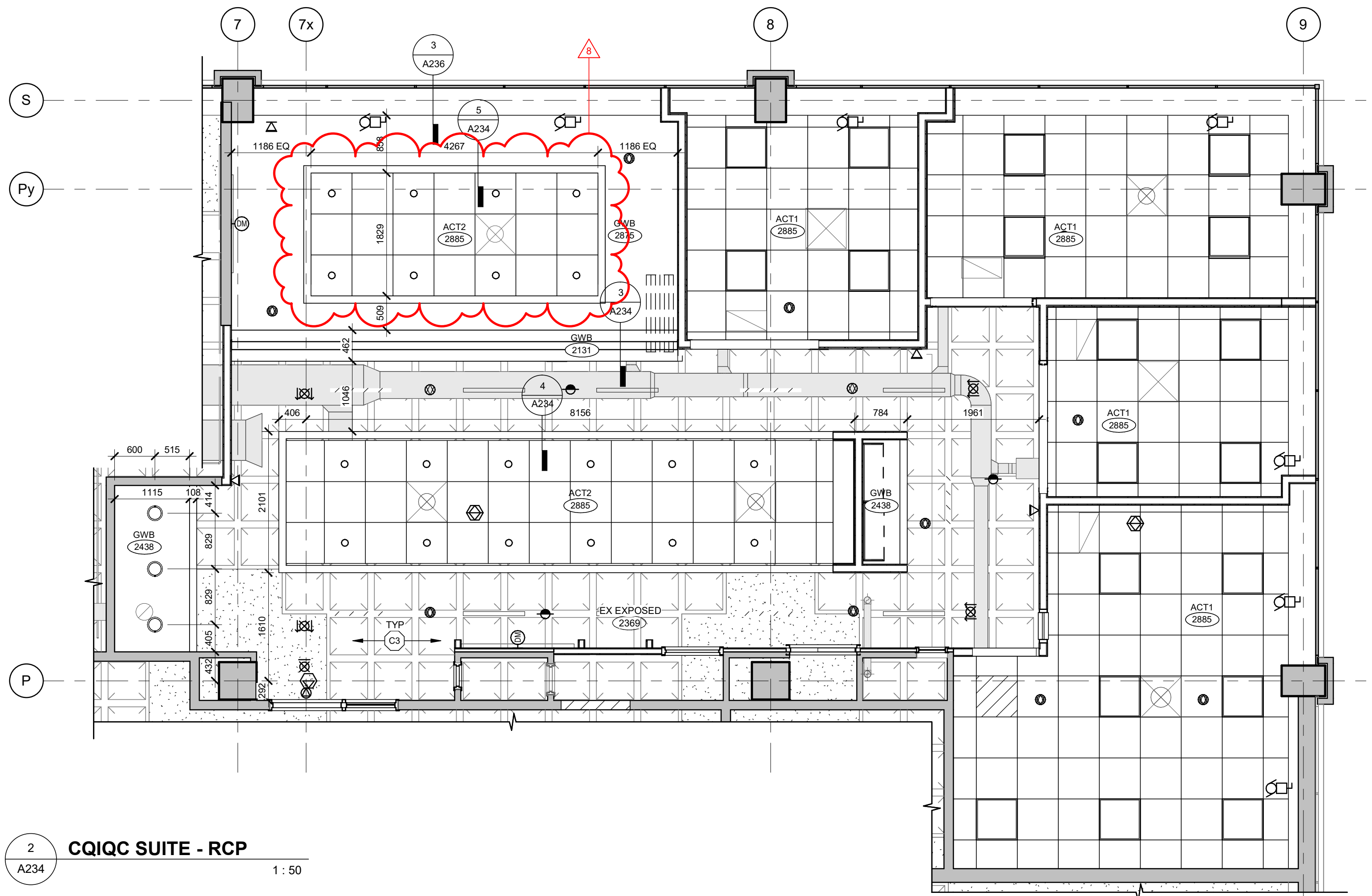
DRAWING NO.

A232



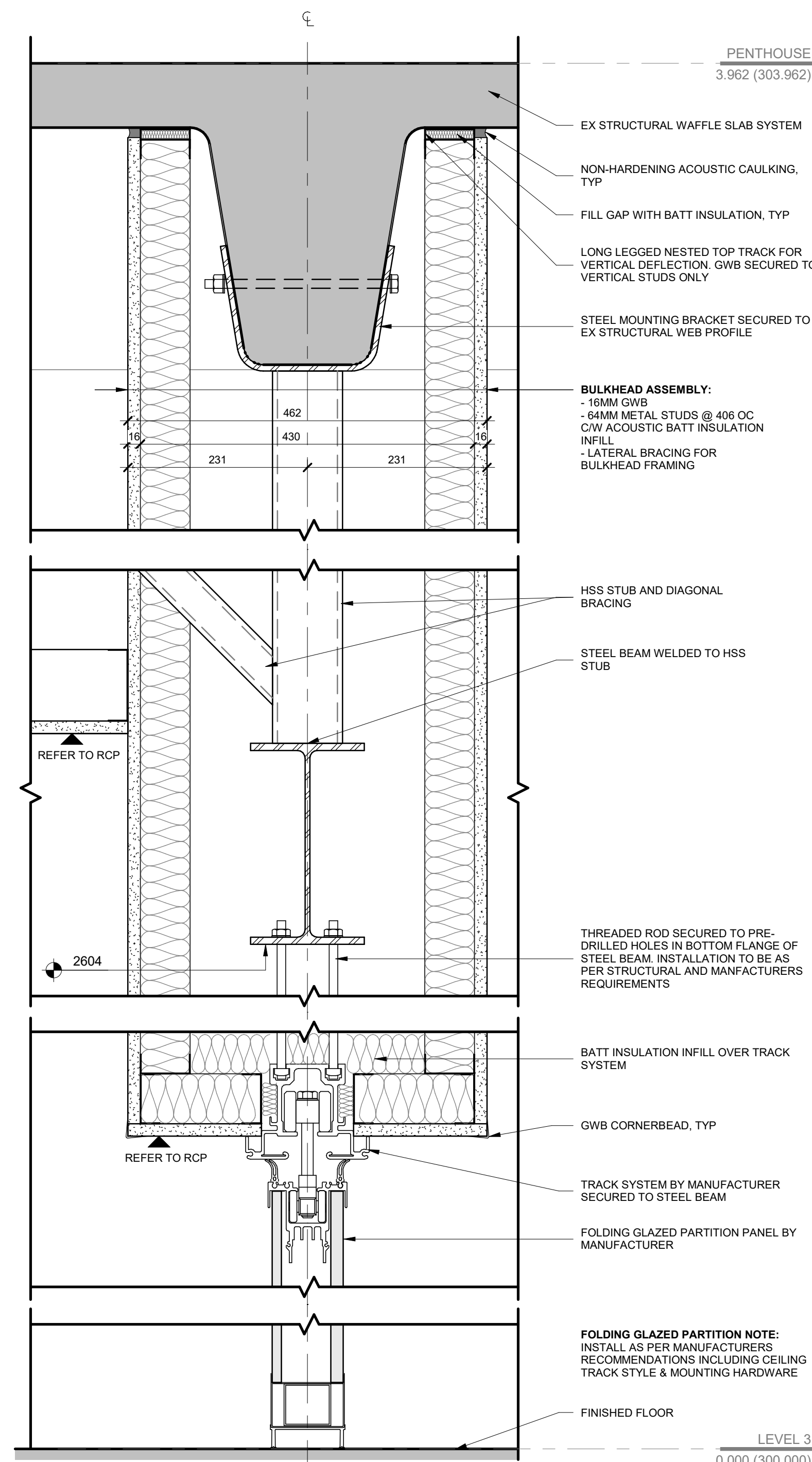
1 CQIQC SUITE - RENOVATION

1:50



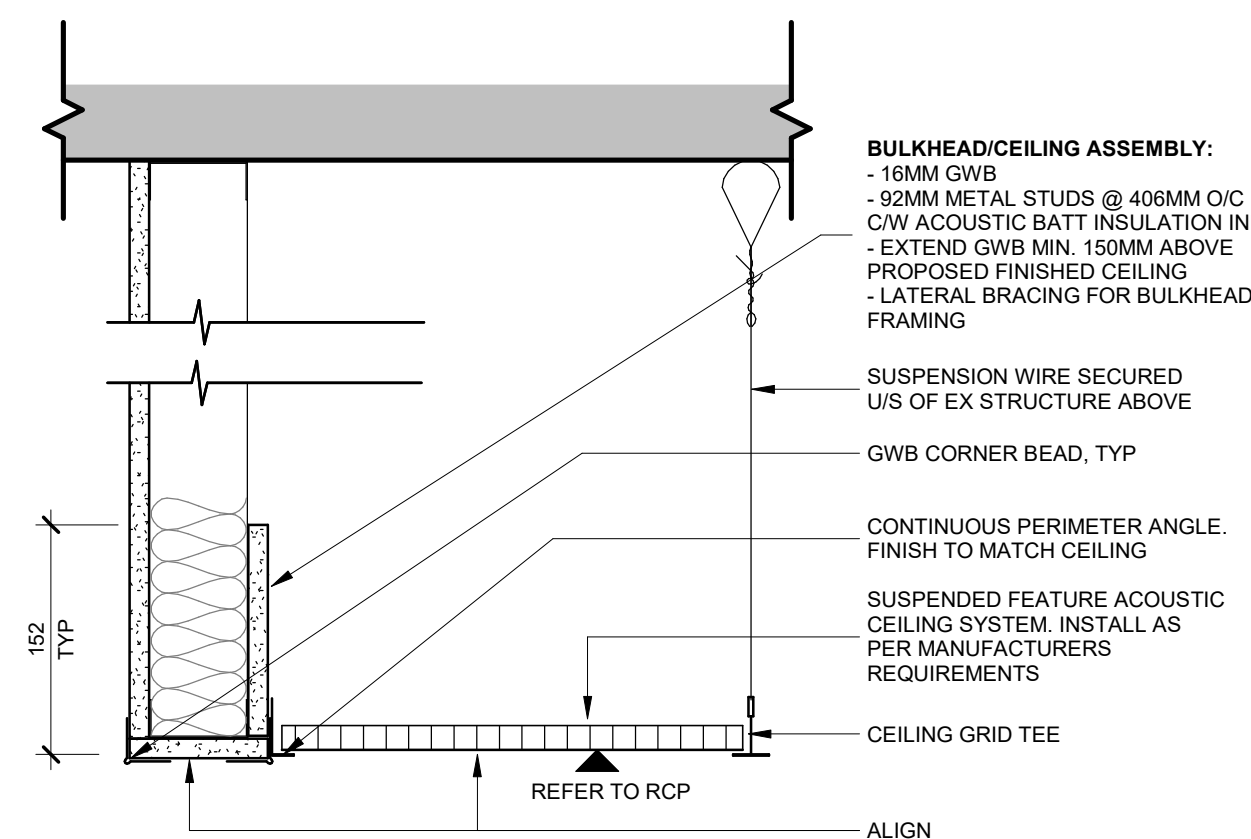
2 CQIQC SUITE - RCP

1:50



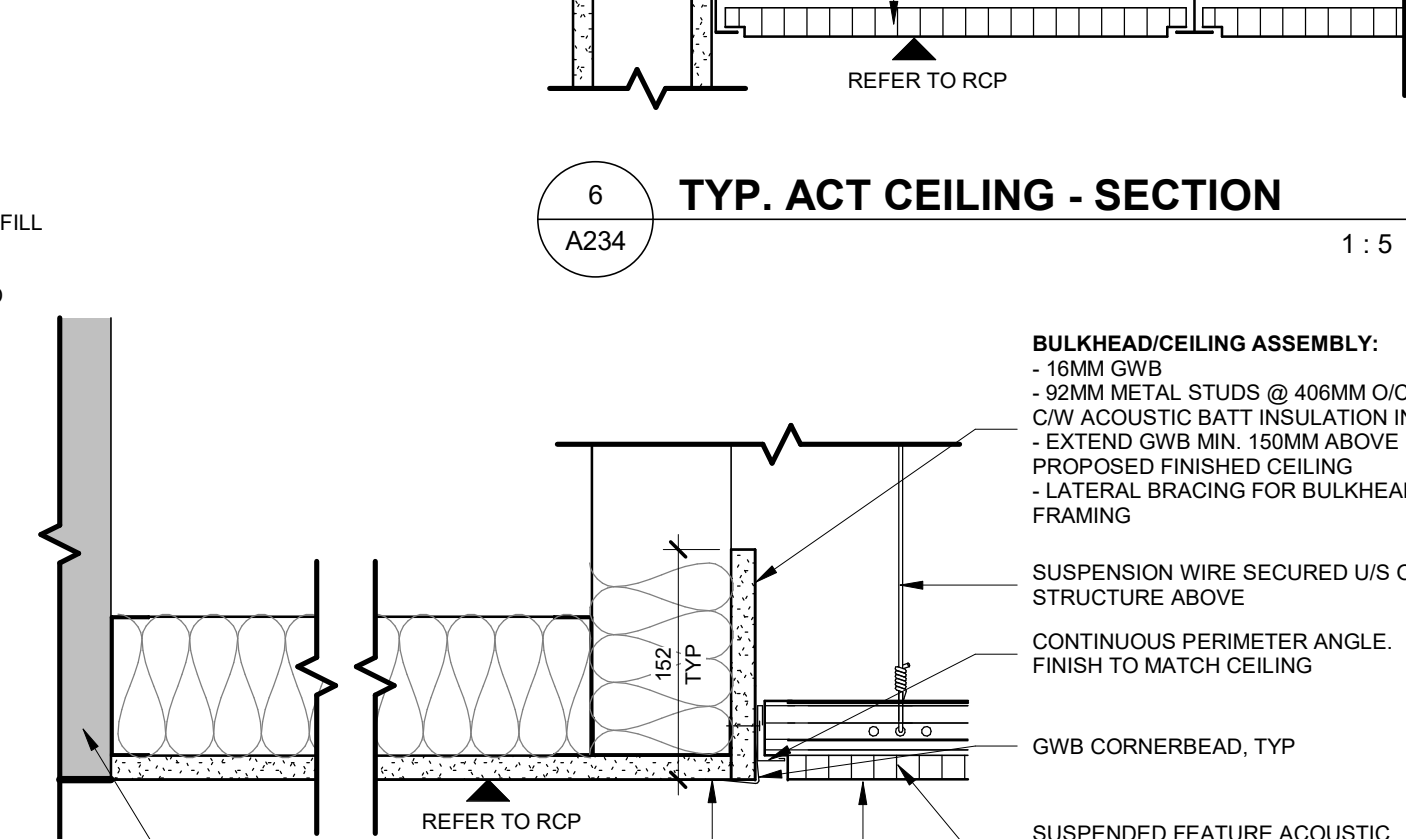
3 FOLDING GLAZED PARTITION - SECTION DETAIL

1:5



4 COLLAB. AREA FEATURE CEILING - SECTION

1:5



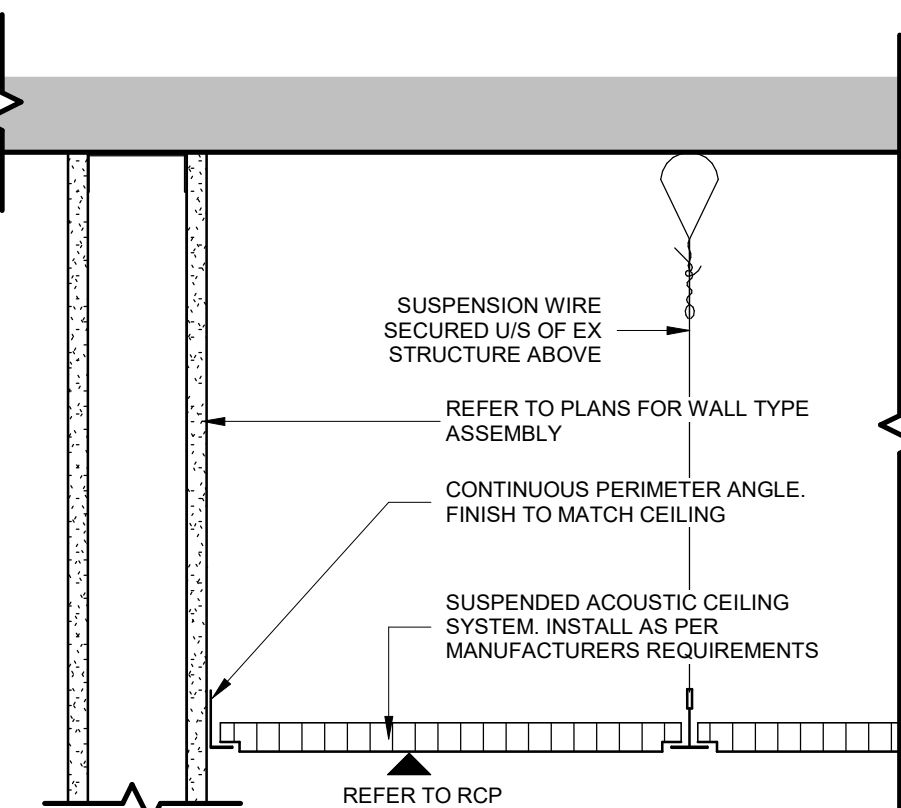
5 MEETING RM FEATURE CEILING - SECTION

1:5

FLOOR PLAN KEYNOTES	
KEY	DESCRIPTION
F5	INFILL WALL OPENING W/ CMU CONSTRUCTION TO MATCH EX (1 HR FRR).
F6	INFILL WALL OPENING W/ STEEL STUD WALL CONSTRUCTION TO MATCH EXISTING. CARRY FRAMING AND GWB TO U/S OF STRUCTURE ABOVE. SEAL HVAC DUCT AND PIPE PENETRATIONS WITH ACOUSTIC SEALANT.
F7	DASHED LINE DENOTES EX STUD WALL PARTITION FRAMING AND GWB TO BE EXTENDED TO U/S OF STRUCTURE ABOVE. INFILL ALL EX AND NEW STUDS W/ ACOUSTIC BATT INSULATION. NEW 16MM GWB ON ENTIRE CQIQC SIDE FROM FLOOR TO U/S OF STRUCTURE ABOVE. MATCH SIM CONSTRUCTION OF WALL TYPE P24. SEAL HVAC DUCT AND PIPE PENETRATIONS WITH ACOUSTIC SEALANT.
F9	NEW 45 MIN FRR ACCESS PANEL IN EX SHAFT WALL.
F10	NEW DOOR OPENING IN EX CMU WALL C/W STEEL LINTEL ABOVE.
F11	FOLDING PARTITION WALL SUPPORTED BY NEW STEEL FRAMING.
F14	EX ACCESS DOOR RELOCATED FROM EX CMU PARTITION TO NEW GWB PARTITION.
F15	RESEAL ALL EX PERIMETER WINDOWS. REFER TO DETAIL.
F16	NEW WINDOW SILL. REFER TO DETAIL.
F19	NEW OPENING FOR ACCESS PANEL IN EX CMU WALL C/W STEEL LINTEL ABOVE.
F22	SHADING DENOTES LOCATION OF NEW WINDOW SILL LOUVER AT EX HYDRONIC UNIT LOCATION (REPLACED W/ NEW). CONFIRM SIZE AND LOCATION OF LOUVER OPENING W/ MECHANICAL DRAWINGS. SILL LOUVER TO MATCH ADJACENT SILL COLOUR.
F23	LOCATION OF EX WALL OPENING AT EX HYDRONIC UNIT LOCATION (REPLACED W/ NEW). CONFIRM SIZE AND LOCATION OF LOUVER OPENING W/ ARCHITECTURE AND MECHANICAL CONSULTANTS PRIOR TO COMMENCING WORK. WALL LOUVER TO MATCH ADJACENT WALL COLOUR.
F24	LOCATION OF NEW HYDRONIC UNIT AND WINDOW SILL OPENING FOR NEW MECHANICAL LOUVER.
F26	LOCATION OF NEW HYDRONIC UNIT AND WALL OPENING FOR MECHANICAL LOUVER. PATCH AND REPAIR ADJACENT FINISHES AS A RESULT OF DEMOLITION.
F28	FLOOR STOP FOR FOLDING DOOR SYSTEM TO AVOID WALL DAMAGE.
F29	NEW CARD READER MOUNTED BESIDE AUTOMATIC DOOR PUSH BUTTON.
F30	GC TO SUPPLY WHITEBOARD W/ BTM SHELF. SIZE: 36" x 48". GC TO CONSULT ID PRIOR TO INSTALLATION FOR HEIGHTS.
F31	GC TO SUPPLY WHITEBOARD W/ BTM SHELF. SIZE: 60" x 42". GC TO CONSULT ID PRIOR TO INSTALLATION FOR HEIGHTS.
F32	PULL-OUT AV RACK WITHIN MEETING ROOM MILLWORK.
F39	EX DOOR PANEL IN ASSUMED EX 1 HR FRR AT SHAFT WALL (BASED ON EX DOCUMENTS PROVIDED - GC TO VERIFY). GC TO VERIFY ANY CONFORM IF EX ACCESS DOOR COMPLIES W/ ASSUMED FRR AND REPLACE IF FOUND NON-COMPLIANT.

REFLECTED CEILING PLAN LEGEND	
NOTE: ALL EXPOSED ROOF/ CLG SURFACES TO BE PAINTED, REFER TO ROOM FINISH SCHEDULE.	
	SUSPENDED ACT CEILING
	GWB ON STEEL FRAMING
	BULKHEAD
	LAY IN LIGHTING FIXTURE, REFER TO ELECTRICAL DRAWINGS
	SUSPENDED LIGHTING FIXTURE, REFER TO ELECTRICAL DRAWINGS
	SUPPLY AIR DIFFUSER, REFER TO MECHANICAL DRAWINGS
	150mm WIDE CABLE BASKET TRAY - U/S @ 2900 AFF W/ CEILING OR WALL SUPPORT
	150mm WIDE CABLE BASKET TRAY - U/S @ 2200 AFF W/ CEILING OR WALL SUPPORT
	300mm WIDE CABLE LADDER TRAY - U/S @ 2600 AFF W/ CEILING SUPPORT
	SEMI-RIGID HELIUM PIPING - U/S @ 2600 AFF
	RIGID STILL PIPING - U/S @ 2400 AFF
*SUPPLIED BY OWNER. ALL SERVICES SHALL BE COORD. TO ENSURE A CLEAR PATH FOR LAB EQUIP. INSTALLATION UPON COMPLETION OF CONSTRUCTION.	
	RIGID STILL PIPING - U/S @ 2400 AFF
*SUPPLIED BY OWNER. ALL SERVICES SHALL BE COORD. TO ENSURE A CLEAR PATH FOR LAB EQUIP. INSTALLATION UPON COMPLETION OF CONSTRUCTION.	

REFLECTED CEILING PLAN KEYNOTES	
KEY	DESCRIPTION
C3	SEAL AND FIRESTOP ALL EX CRACKS AND PENETRATIONS IN EX WAFFLE STRUCTURE.



6 TYP. ACT CEILING - SECTION

1:5

UNIVERSITY OF TORONTO

PROJECT LOGO

TRUE NORTH

CONSTRUCTION NORTH

KEY PLAN

8	ADDENDUM #2	2026 01 13
7	ADDENDUM #1	2026 01 13
6	IFT	2025 11 27
5	ISSUED FOR 100% CD	2025 11 21
4	ISSUED FOR 90% CD	2025 10 17
3	ISSUED FOR PERMIT	2025 10 03
2	ISSUED FOR 100% R1	2025 09 19
1	ISSUED FOR 100% SD	2025 07 11
REVISIONS		DATE

DISCREPANCIES MUST BE REPORTED IMMEDIATELY TO THE ARCHITECT / ENGINEER BEFORE PROCEEDING.

ONLY FIGURED DIMENSIONS MUST BE USED.

THE CONTRACTOR MUST CHECK THE DIMENSIONS ON SITE.

THE DRAWING IS PROTECTED BY COPYRIGHT.

ALL DIMENSIONS ARE SHOWN IN MILLIMETERS.

DO NOT SCALE THE DRAWINGS.

McCallumSather

Westinghouse HQ, 2nd Floor
286 Sanford Ave. N
Hamilton, ON L8L 6A1
905.526.6700
www.mccallumsather.com

PROJECT:

MCLENNAN PHYSICAL LABORATORIES - P078-24-109 - QIS LAB & CQIQC SUITE

255 HURON STREET, TORONTO, ONTARIO M5S 3J1

DRAWING TITLE:

CQIQC SUITE - PLAN & RCP

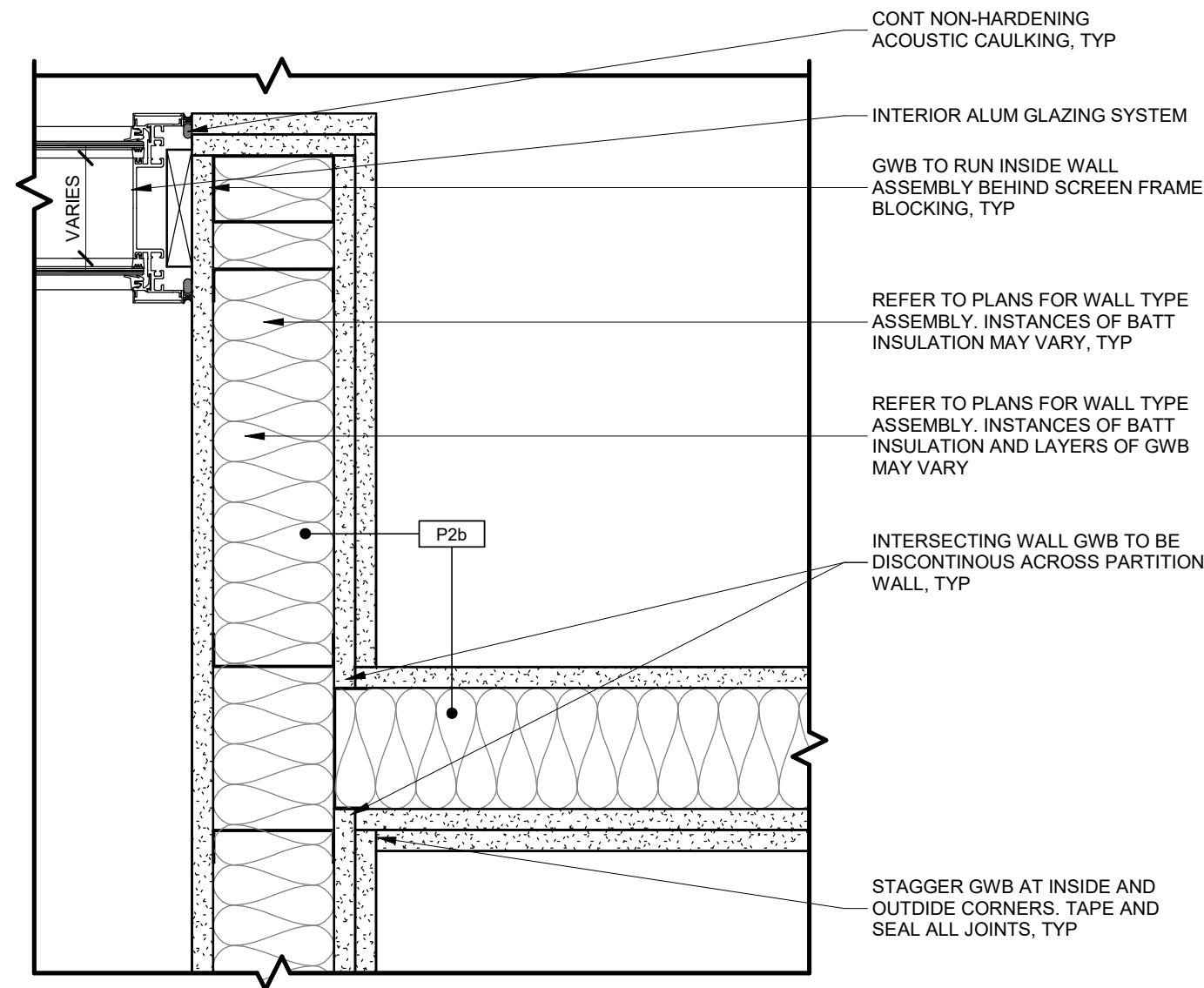
SHEET SIZE:	ARCH D (810x914)	SCALE:	As Indicated
-------------	------------------	--------	--------------

PROJECT NO:

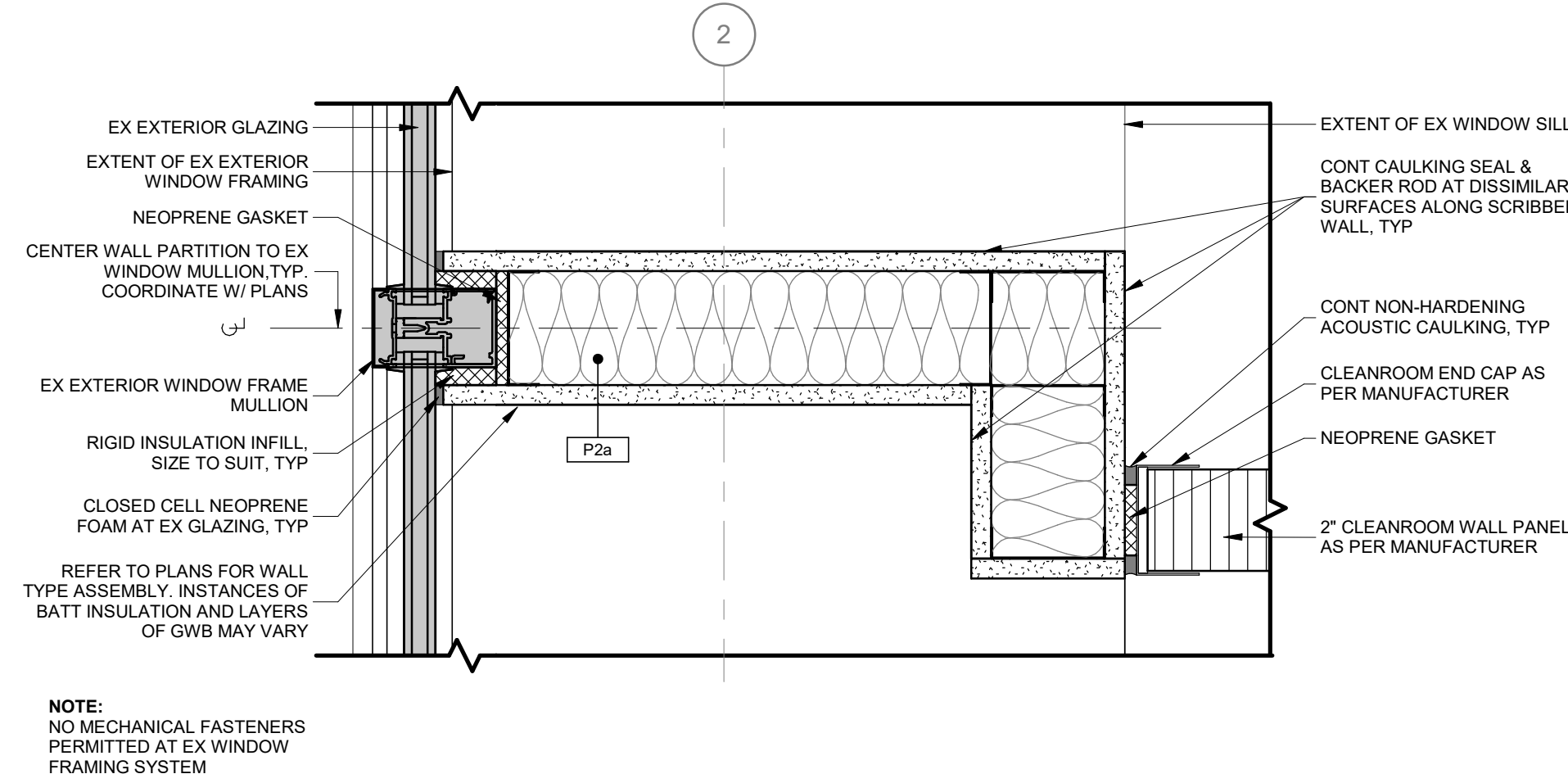
24119

DRAWING NO:

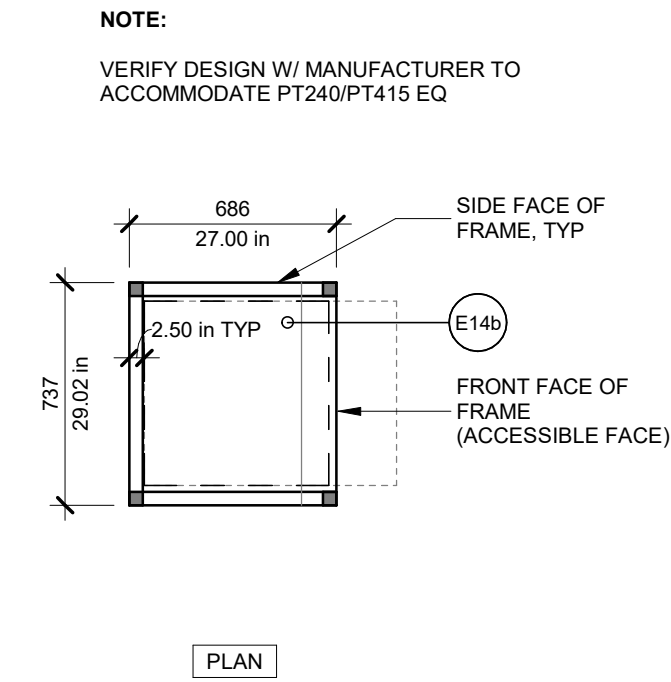
A234



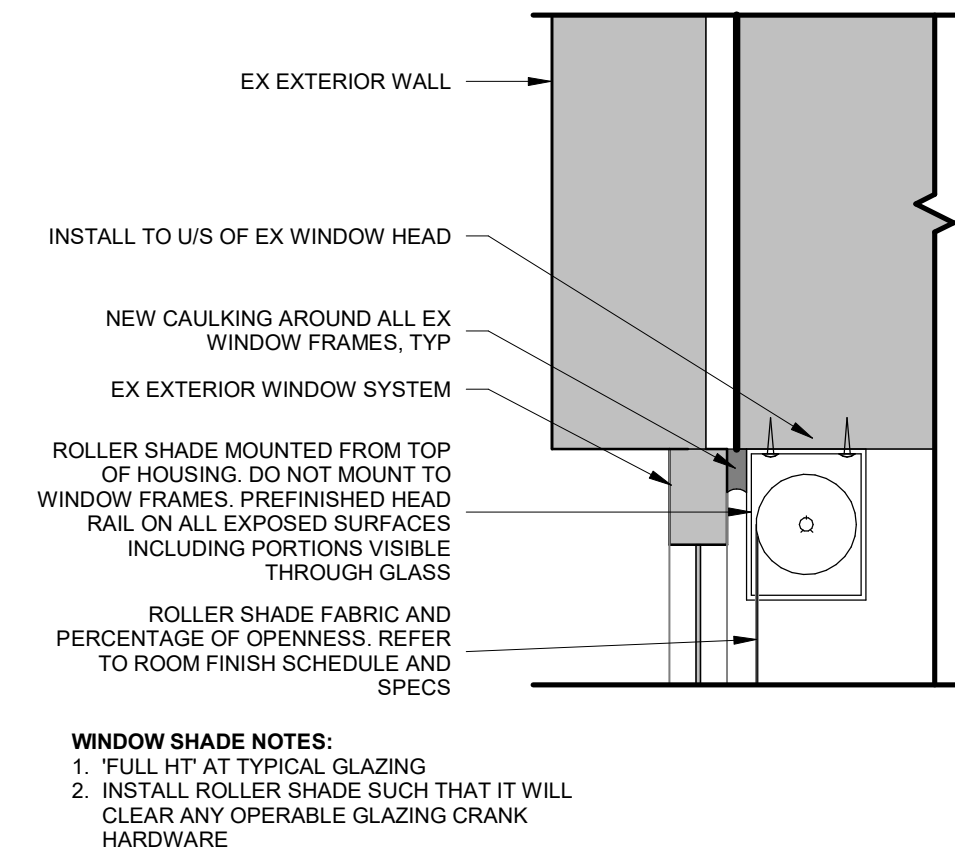
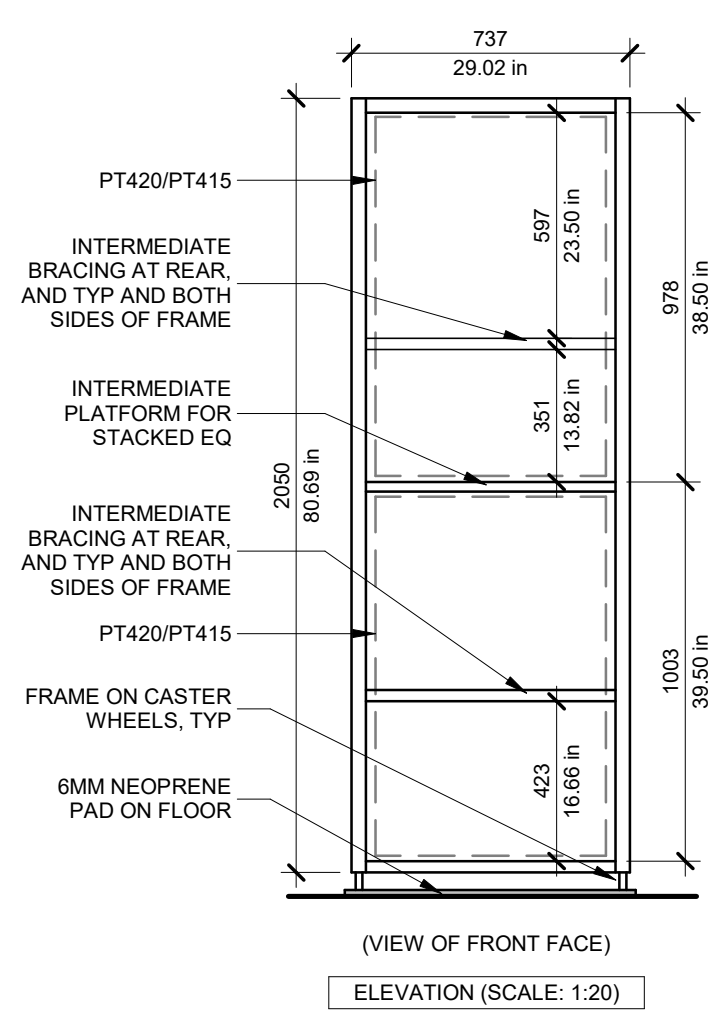
1
A236
INTERSECTING ACOUSTIC WALL PLAN DETAIL
1:5



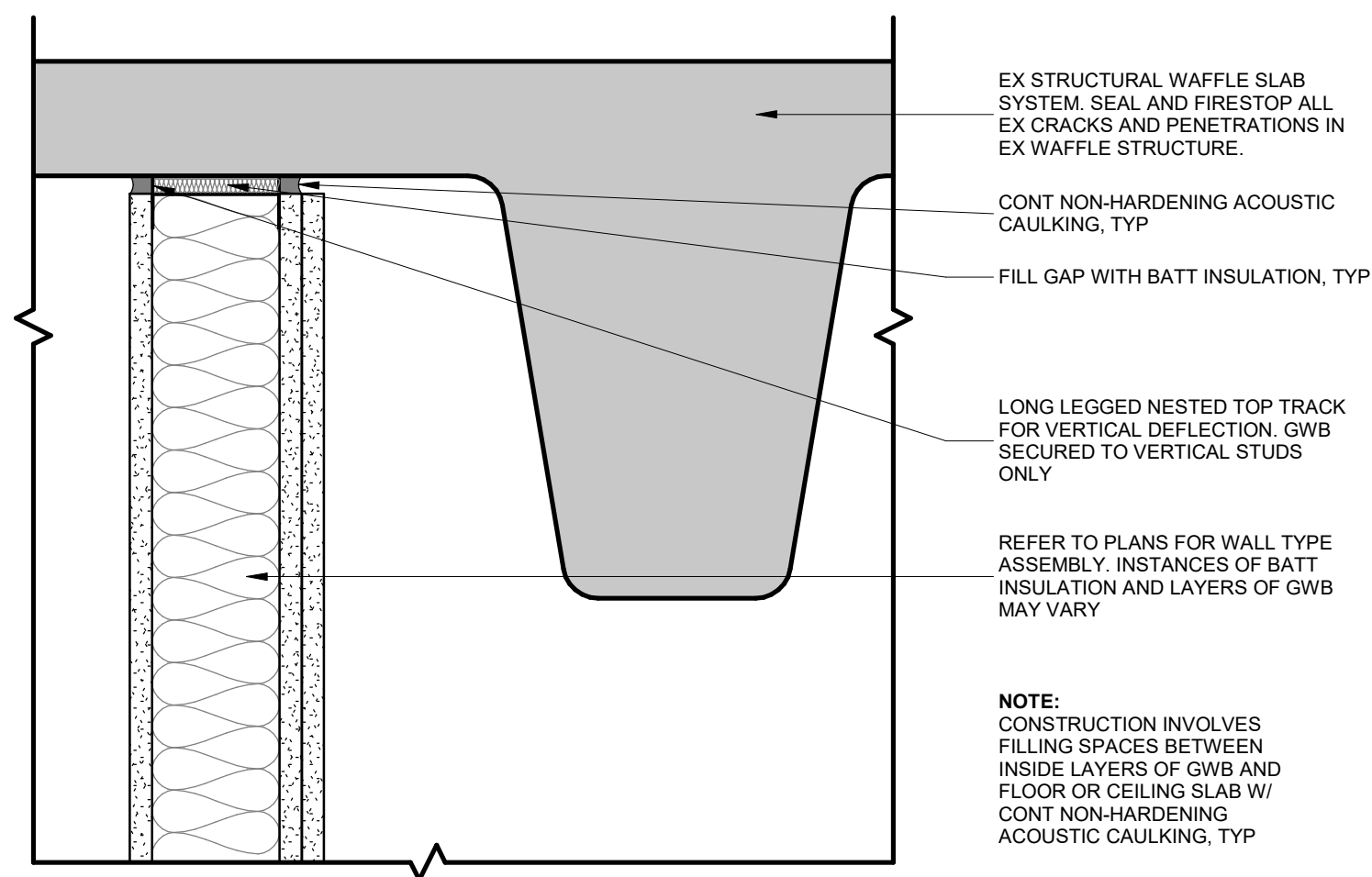
2
A236
PLAN DETAIL AT EXTERIOR WINDOW
1:5



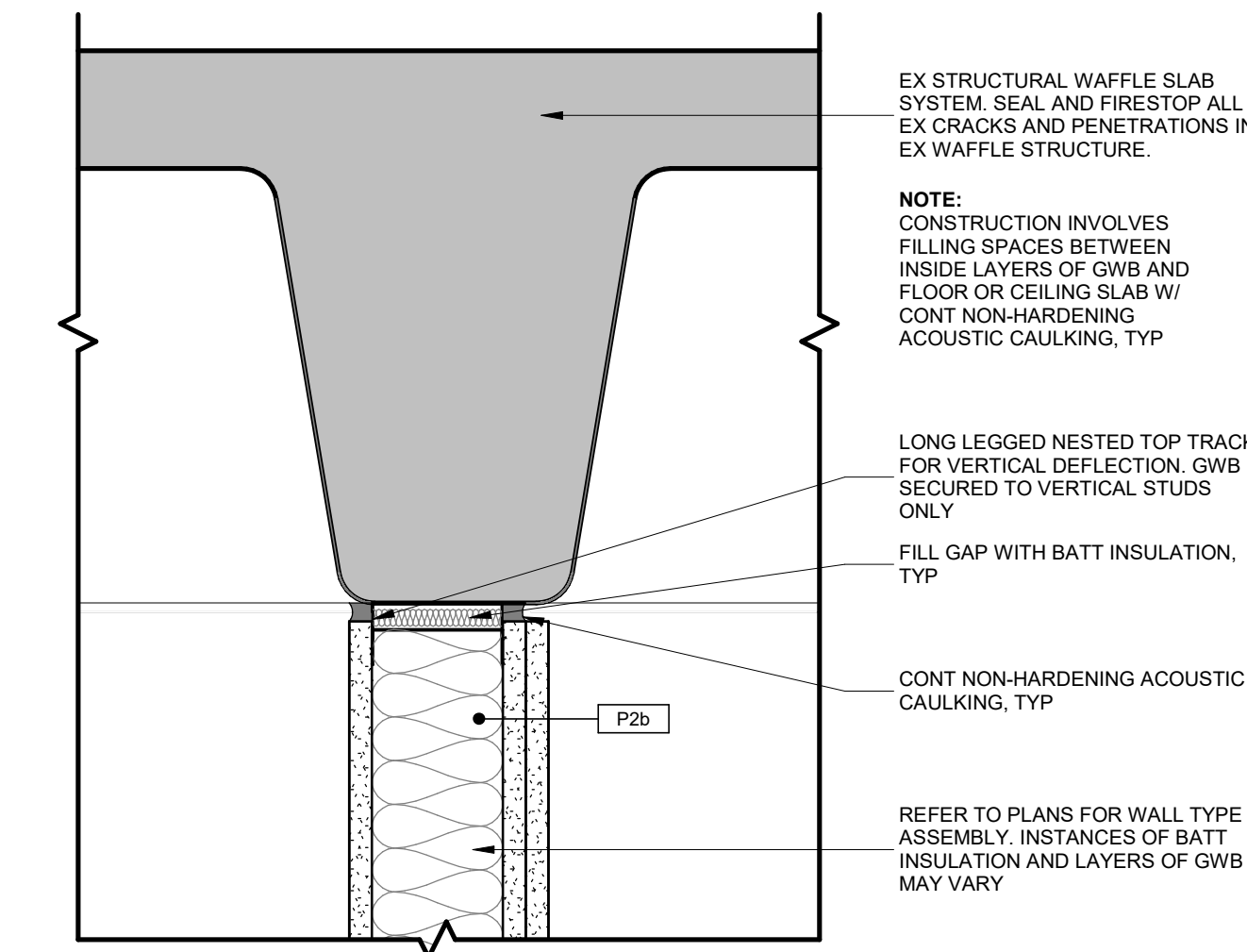
11
A236
COMPRESSOR FRAME ASSEMBLY DETAIL
1:25



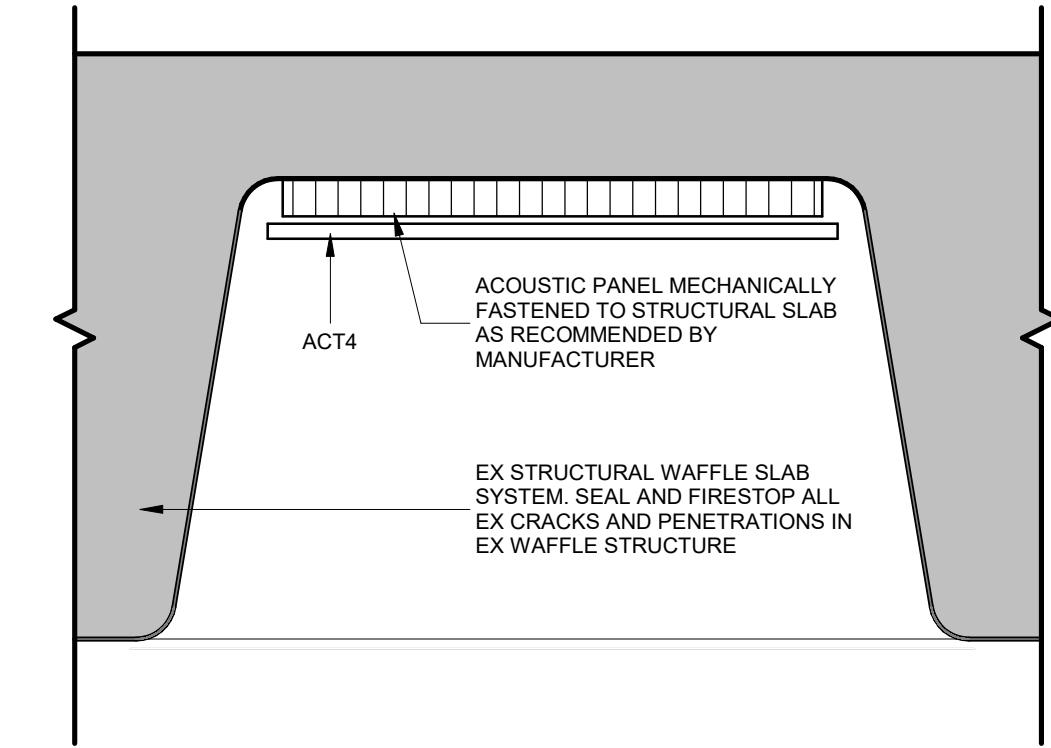
3
A236
TYP WINDOW HEAD CEILING SECTION
1:5



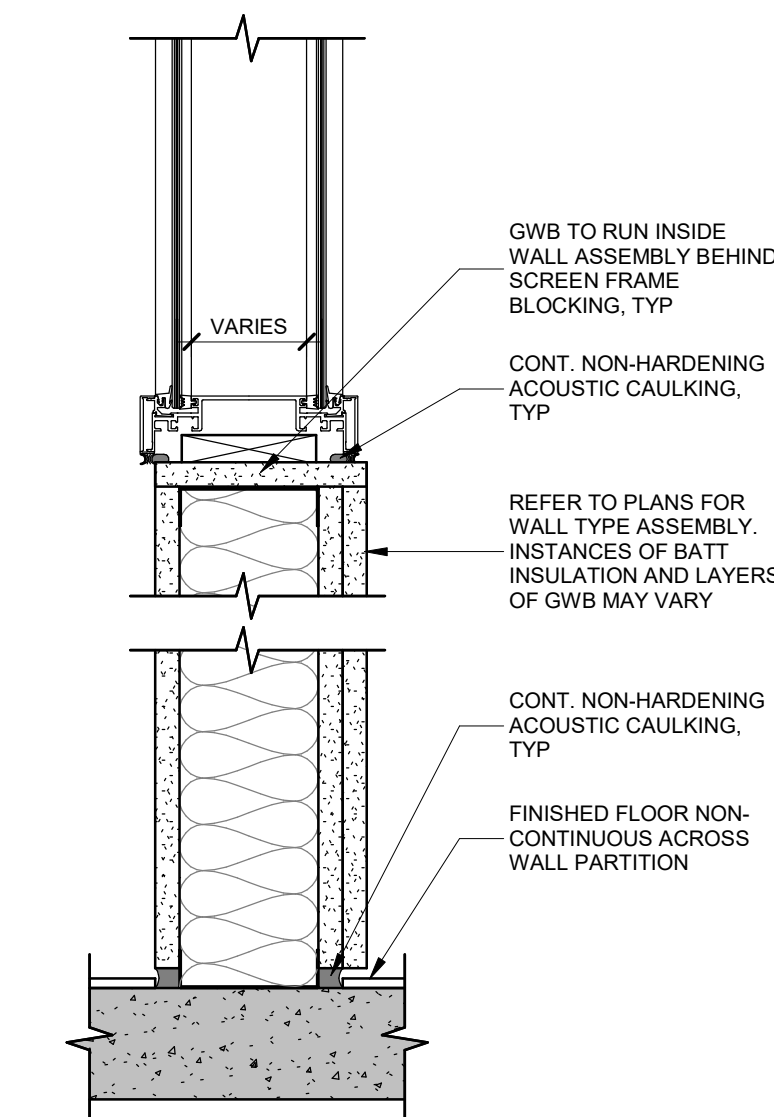
4
A236
ACOUSTIC WALL SECTION DETAIL A
(WALL NOT CENTRED ON RIB)
(CQIQC SIDE ONLY)
1:5



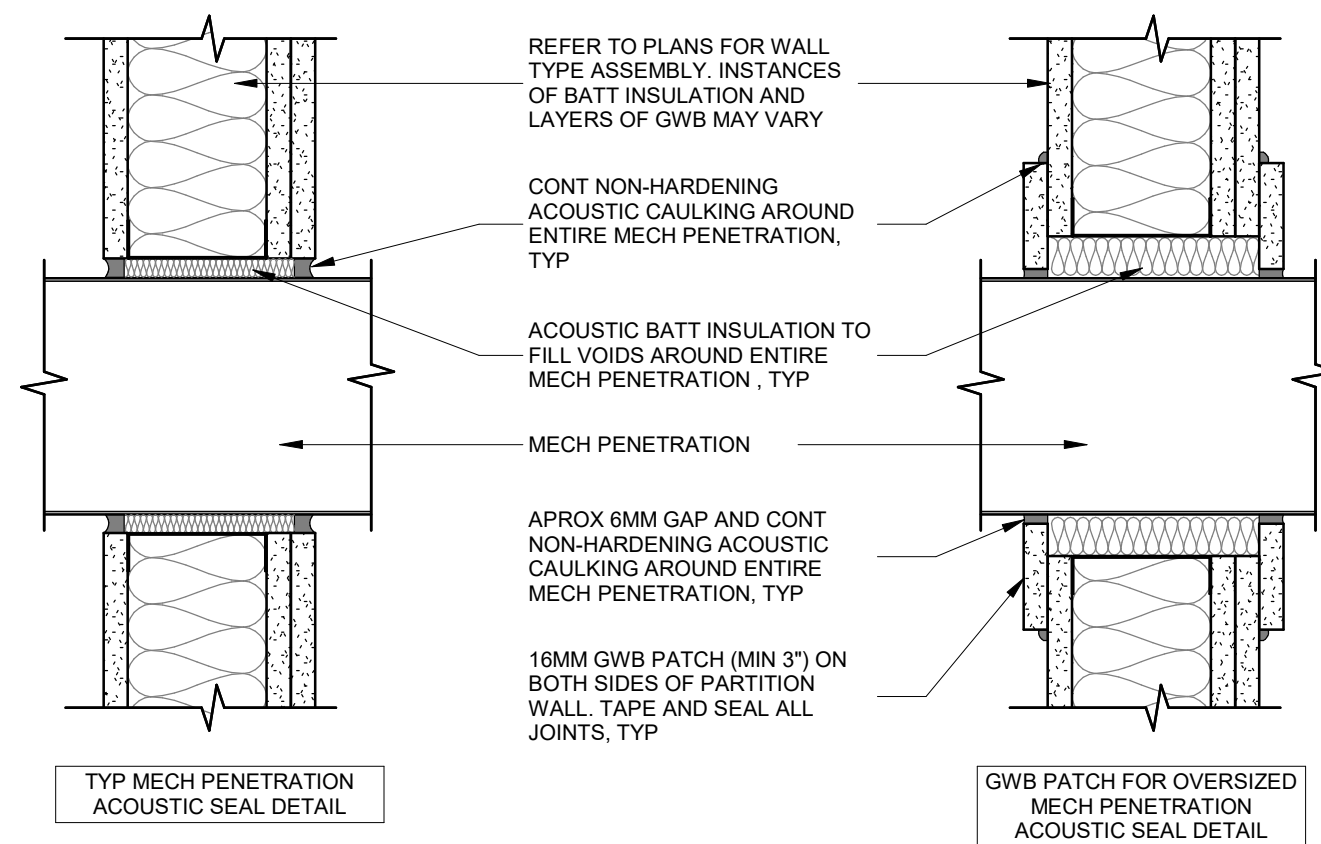
5
A236
ACOUSTIC WALL SECTION DETAIL B
(WALL CENTRED ON RIB)
1:5



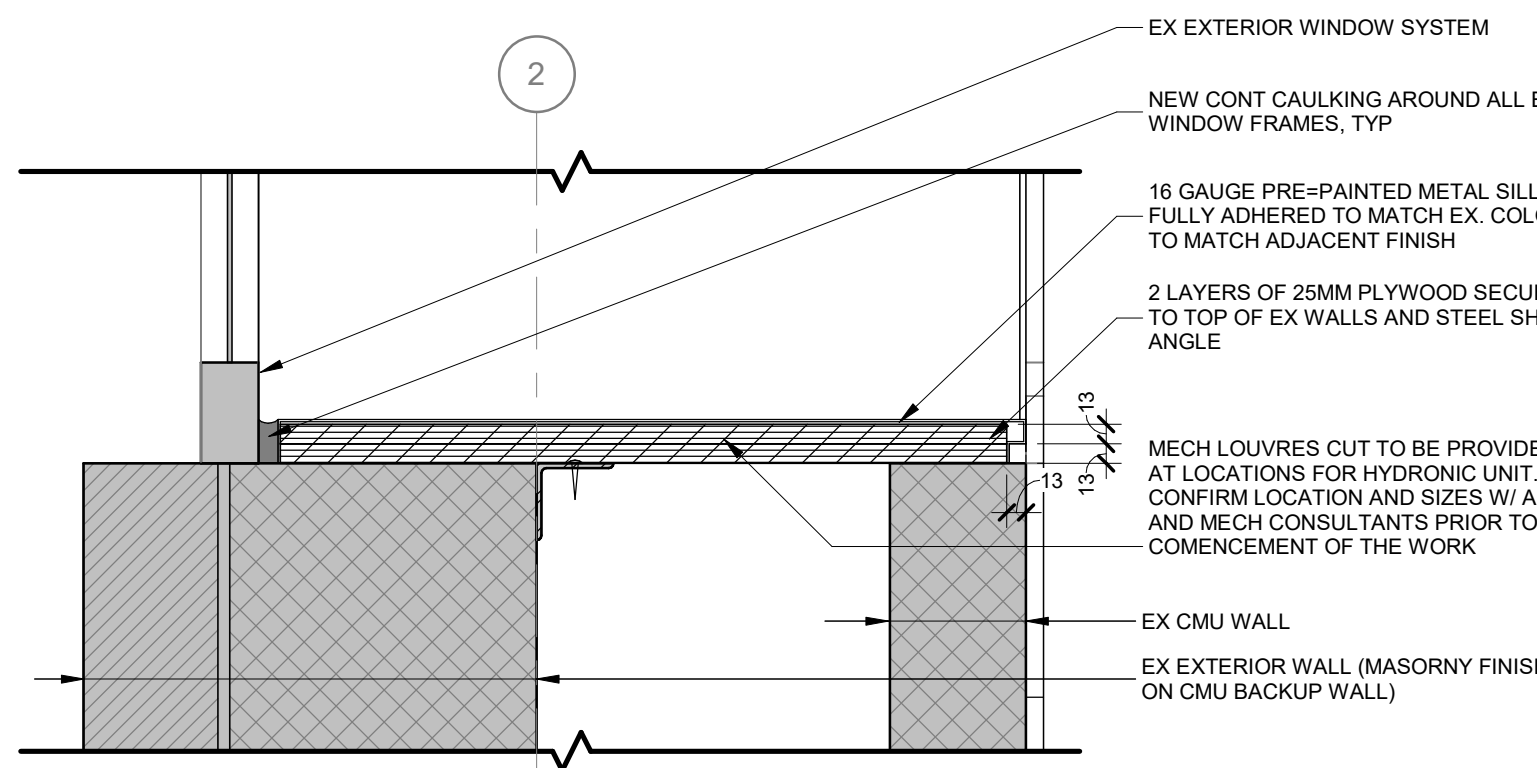
6
A236
ACOUSTIC PANEL INFILL SECTION DETAIL
1:5



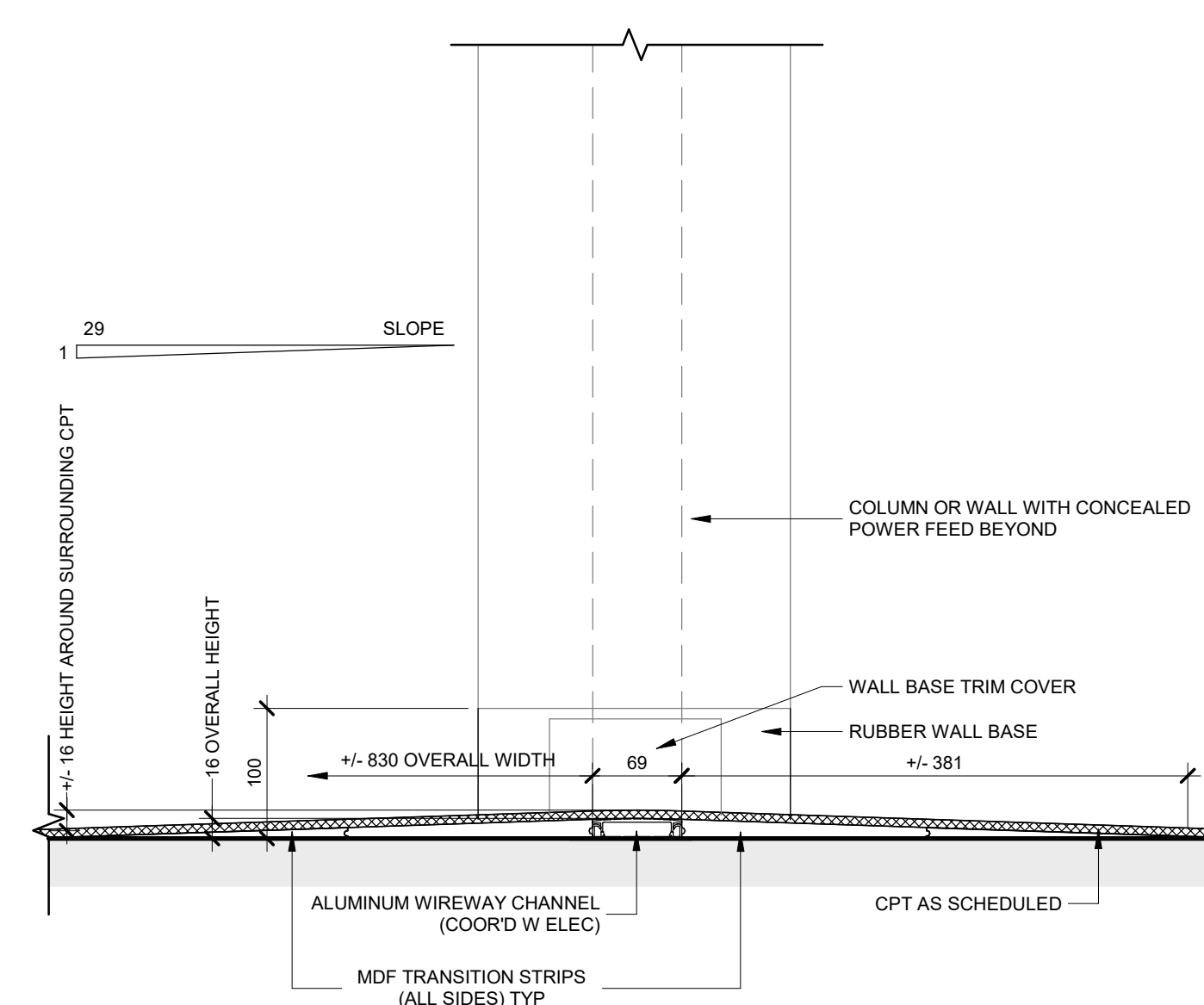
7
A236
SECTION DETAIL - SCREEN
1:5



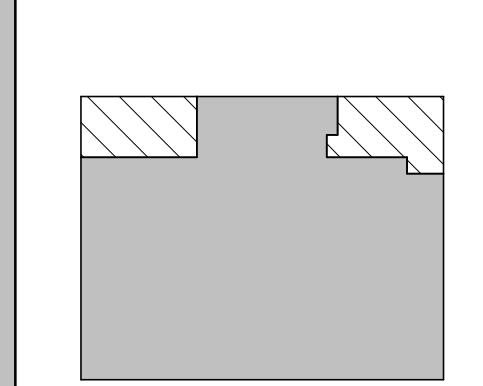
8
A236
SECTION DETAIL - MECH PENETRATIONS
1:5



9
A236
SECTION DETAIL AT WINDOW SILL
1:5



10
A236
FLOOR TRANSITION - CARPET
1:5



NO.	DESCRIPTION	DATE
1	ISSUED FOR 100% CD	2025.11.21
2	ISSUED FOR 100% CD	2025.11.21
3	ISSUED FOR 100% CD	2025.11.21
4	ISSUED FOR 100% CD	2025.11.21

DISCREPANCIES MUST BE REPORTED IMMEDIATELY TO THE ARCHITECT / ENGINEER BEFORE PROCEEDING.
ONLY FIGURED DIMENSIONS MUST BE USED.
THE CONTRACTOR MUST CHECK THE DIMENSIONS ON SITE.
THE DRAWING IS PROTECTED BY COPYRIGHT.
ALL DIMENSIONS ARE SHOWN IN MILLIMETERS.
DO NOT SCALE THE DRAWINGS.

McCallumSather
Westinghouse HQ, 2nd Floor
286 Sanford Ave. N
Hamilton, ON L8L 6A1
905.526.6700
www.mccallumsather.com

PROJECT:
**MCLENNAN PHYSICAL
LABORATORIES - P078-24-109 -
QIS LAB & CQIQC SUITE**

**255 HURON STREET, TORONTO,
ONTARIO M5S 3J1**

DRAWING TITLE:
DETAILS

SHEET SIZE: ARCH D (810x614) SCALE: As indicated

PROJECT NO: **24119**

DRAWING NO: **A236**